

**SCGN Antibody**  
**Rabbit mAb**  
**Catalog # AP92068****Specification**

---

**SCGN Antibody - Product Information**

Application	WB, IHC, IP
Primary Accession	<a href="#">076038</a>
Reactivity	Rat
Clonality	Monoclonal

**Other Names**

CALBL; Scgn; SECRET; Secretagogen; SEGN; Setagin;

Isotype	Rabbit IgG
Host	Rabbit
Calculated MW	32040 Da

**SCGN Antibody - Additional Information**

Dilution	WB~~1:1000 IHC~~1:100~500 IP~~N/A
Purification	Affinity-chromatography
Immunogen	A synthesized peptide derived from human SCGN
Description	Expressed at high levels in the pancreatic islets of Langerhans and to a much lesser extent in the gastrointestinal tract (stomach, small intestine and colon), the adrenal medulla and cortex and the thyroid C-cells.
Storage Condition and Buffer	Rabbit IgG in phosphate buffered saline , pH 7.4, 150mM NaCl, 0.02% sodium azide and 50% glycerol. Store at +4°C short term. Store at -20°C long term. Avoid freeze / thaw cycle.

**SCGN Antibody - Protein Information****Name** SCGN**Synonyms** SECRET**Cellular Location**

Cytoplasm. Secreted. Cytoplasmic vesicle, secretory vesicle membrane; Peripheral membrane protein; Cytoplasmic side Note=Predominantly cytoplasmic. A small proportion is associated with secretory granules and membrane fractions (By similarity). Detectable in human serum after ischemic neuronal damage.

### Tissue Location

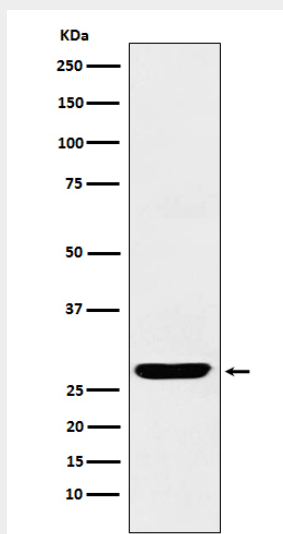
Expressed at high levels in the pancreatic islets of Langerhans and to a much lesser extent in the gastrointestinal tract (stomach, small intestine and colon), the adrenal medulla and cortex and the thyroid C-cells. In the brain, the expression is restricted to distinct subtypes of neurons with highest expression in the molecular layer of the cerebellum (stellate and basket cells), in the anterior part of the pituitary gland, in the thalamus, in the hypothalamus and in a subgroup of neocortical neurons.

### SCGN Antibody - Protocols

Provided below are standard protocols that you may find useful for product applications.

- [Western Blot](#)
- [Blocking Peptides](#)
- [Dot Blot](#)
- [Immunohistochemistry](#)
- [Immunofluorescence](#)
- [Immunoprecipitation](#)
- [Flow Cytometry](#)
- [Cell Culture](#)

### SCGN Antibody - Images



Western blot analysis of SCGN expression in human fetal brain lysate.