

S39A3 Antibody (Center)
Affinity Purified Rabbit Polyclonal Antibody (Pab)
Catalog # AP9206C**Specification**

S39A3 Antibody (Center) - Product Information

Application	IHC-P, WB,E
Primary Accession	Q9BRY0
Reactivity	Human, Mouse
Host	Rabbit
Clonality	Polyclonal
Isotype	Rabbit IgG
Calculated MW	33601
Antigen Region	106-134

S39A3 Antibody (Center) - Additional Information**Gene ID** 29985**Other Names**

Zinc transporter ZIP3, Solute carrier family 39 member 3, Zrt- and Irt-like protein 3, ZIP-3, SLC39A3, ZIP3

Target/Specificity

This S39A3 antibody is generated from rabbits immunized with a KLH conjugated synthetic peptide between 106-134 amino acids from the Central region of human S39A3.

Dilution

IHC-P~~1:50~100

WB~~1:1000

E~~Use at an assay dependent concentration.

Format

Purified polyclonal antibody supplied in PBS with 0.09% (W/V) sodium azide. This antibody is purified through a protein A column, followed by peptide affinity purification.

Storage

Maintain refrigerated at 2-8°C for up to 2 weeks. For long term storage store at -20°C in small aliquots to prevent freeze-thaw cycles.

Precautions

S39A3 Antibody (Center) is for research use only and not for use in diagnostic or therapeutic procedures.

S39A3 Antibody (Center) - Protein Information**Name** SLC39A3 ([HGNC:17128](#))

Synonyms ZIP3

Function Transporter for the divalent cation Zn(2+). Mediates the influx of Zn(2+) into cells from extracellular space. Controls Zn(2+) accumulation into dentate gyrus granule cells in the hippocampus. Mediates Zn(2+) reuptake from the secreted milk within the alveolar lumen.

Cellular Location

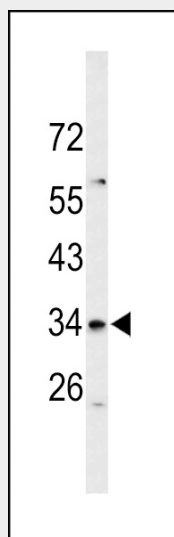
Cell membrane {ECO:0000250|UniProtKB:Q99K24}; Multi-pass membrane protein. Apical cell membrane {ECO:0000250|UniProtKB:Q99K24}; Multi-pass membrane protein. Note=Localized primarily at the cell surface but also found in a perinuclear compartment in HC11 cells. In mammary epithelial cell, localized primary to the apical membrane {ECO:0000250|UniProtKB:Q99K24}

S39A3 Antibody (Center) - Protocols

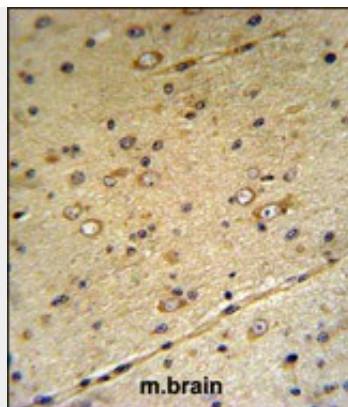
Provided below are standard protocols that you may find useful for product applications.

- [Western Blot](#)
- [Blocking Peptides](#)
- [Dot Blot](#)
- [Immunohistochemistry](#)
- [Immunofluorescence](#)
- [Immunoprecipitation](#)
- [Flow Cytometry](#)
- [Cell Culture](#)

S39A3 Antibody (Center) - Images



Western blot analysis of S39A3 Antibody (Center) (Cat. #AP9206c) in mouse cerebellum tissue lysates (35ug/lane). S39A3 (arrow) was detected using the purified Pab.



S39A3 Antibody (Center) (Cat. #AP9206c) IHC analysis in formalin fixed and paraffin embedded mouse brain tissue followed by peroxidase conjugation of the secondary antibody and DAB staining. This data demonstrates the use of the S39A3 Antibody (Center) for immunohistochemistry. Clinical relevance has not been evaluated.

S39A3 Antibody (Center) - References

Ollila, H.M., et.al., Mol. Psychiatry 14 (4), 351-353 (2009)
Kahmann, L., et.al, Rejuvenation Res 11 (1), 227-237 (2008)