

FSH beta [FSHB] Antibody
Rabbit mAb
Catalog # AP92074**Specification****FSH beta [FSHB] Antibody - Product Information**

Application	WB, IP
Primary Accession	P01225
Clonality	Monoclonal
Other Names	
Follicle Stimulating Hormon; Follitropin beta chain; Follitropin subunit beta; FSHB; FSHbeta;	
Isotype	Rabbit IgG
Host	Rabbit
Calculated MW	14700 Da

FSH beta [FSHB] Antibody - Additional Information

Dilution	WB~~1:1000 IP~~N/A
Purification	Affinity-chromatography
Immunogen	A synthesized peptide derived from human FSH beta [FSHB]
Description	Follicle stimulating hormone enables ovarian folliculogenesis to the antral follicle stage and is essential for Sertoli cell proliferation and maintenance of sperm quality in the testis.
Storage Condition and Buffer	Rabbit IgG in phosphate buffered saline , pH 7.4, 150mM NaCl, 0.02% sodium azide and 50% glycerol. Store at +4°C short term. Store at -20°C long term. Avoid freeze / thaw cycle.

FSH beta [FSHB] Antibody - Protein Information**Name FSHB****Function**

Together with the alpha chain CGA constitutes follitropin, the follicle-stimulating hormone, and provides its biological specificity to the hormone heterodimer. Binds FSHR, a G protein-coupled receptor, on target cells to activate downstream signaling pathways (PubMed:24692546, PubMed:2494176). Follitropin is involved in follicle development and spermatogenesis in reproductive organs (PubMed:407105, PubMed:8220432).

Cellular Location

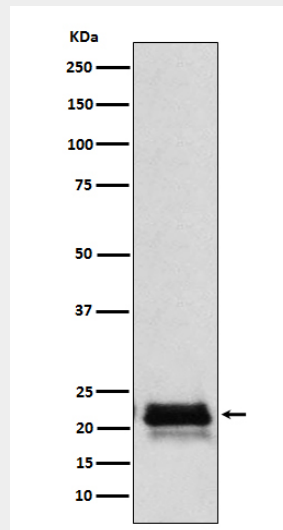
Secreted. Note=Efficient secretion requires dimerization with CGA

FSH beta [FSHB] Antibody - Protocols

Provided below are standard protocols that you may find useful for product applications.

- [Western Blot](#)
- [Blocking Peptides](#)
- [Dot Blot](#)
- [Immunohistochemistry](#)
- [Immunofluorescence](#)
- [Immunoprecipitation](#)
- [Flow Cytometry](#)
- [Cell Culture](#)

FSH beta [FSHB] Antibody - Images



Western blot analysis of FSH beta (FSHB) expression in Human pituitary lysate.