

C4A Antibody
Rabbit mAb
Catalog # AP92078

Specification

C4A Antibody - Product Information

Application	WB, IHC, FC
Primary Accession	POCOL4
Clonality	Monoclonal
Other Names	
Acidic C4; Acidic complement C4; Basic C4; Basic complement C4; C4A; C4A2; C4A3; C4A4; C4A6; C4AD; C4B1; C4B12; C4B2; C4B3; C4BD; C4F; C4S; CPAMD2; CPAMD3;	
Isotype	Rabbit IgG
Host	Rabbit
Calculated MW	192785 Da

C4A Antibody - Additional Information

Dilution	WB~~1:1000 IHC~~1:100~500 FC~~1:10~50
Purification	Affinity-chromatography
Immunogen	A synthesized peptide derived from human C4A
Description	Induces the contraction of smooth muscle, increases vascular permeability and causes histamine release from mast cells and basophilic leukocytes.
Storage Condition and Buffer	Rabbit IgG in phosphate buffered saline , pH 7.4, 150mM NaCl, 0.02% sodium azide and 50% glycerol. Store at +4°C short term. Store at -20°C long term. Avoid freeze / thaw cycle.

C4A Antibody - Protein Information

Name C4A {ECO:0000303|PubMed:6546707, ECO:0000312|HGNC:HGNC:1323}

Function

Precursor of non-enzymatic components of the classical, lectin and GZMK complement pathways, which consist in a cascade of proteins that leads to phagocytosis and breakdown of pathogens and signaling that strengthens the adaptive immune system.

Cellular Location

Secreted. Synapse Cell projection, axon. Cell projection, dendrite [Complement C4b-A]: Secreted. Cell surface. Note=Covalently associated with the surface of pathogens: the internal thioester bond reacts with carbohydrate antigens on the target surface to form amide or ester bonds.

Tissue Location

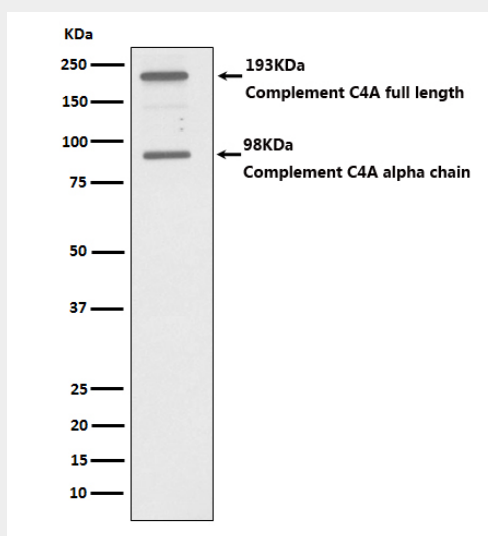
Complement component C4 is expressed at highest levels in the liver, at moderate levels in the adrenal cortex, adrenal medulla, thyroid gland, and the kidney, and at lowest levels in the heart, ovary, small intestine, thymus, pancreas and spleen (PubMed:11367523). The extra-hepatic sites of expression may be important for the local protection and inflammatory response (PubMed:11367523).

C4A Antibody - Protocols

Provided below are standard protocols that you may find useful for product applications.

- [Western Blot](#)
- [Blocking Peptides](#)
- [Dot Blot](#)
- [Immunohistochemistry](#)
- [Immunofluorescence](#)
- [Immunoprecipitation](#)
- [Flow Cytometry](#)
- [Cell Culture](#)

C4A Antibody - Images



Western blot analysis of C4A expression in HepG2 cell lysate.