

**GRB7 Antibody**  
**Rabbit mAb**  
**Catalog # AP92084****Specification**

---

**GRB7 Antibody - Product Information**

Application	WB, IHC
Primary Accession	<a href="#">Q14451</a>
Reactivity	Rat
Clonality	Monoclonal
<b>Other Names</b>	
B47; Epidermal growth factor receptor GRB 7; GRB7 adapter protein; GRB7;	
Isotype	Rabbit IgG
Host	Rabbit
Calculated MW	59681 Da

**GRB7 Antibody - Additional Information**

Dilution	WB~~1:1000 IHC~~1:100~500
Purification	Affinity-chromatography
Immunogen	A synthesized peptide derived from human GRB7
Description	Interacts with the cytoplasmic domain of the epidermal growth factor receptor which is then inhibited. The interaction is mediated by the SH2 domain. Also binds to ERBB2.
Storage Condition and Buffer	Rabbit IgG in phosphate buffered saline , pH 7.4, 150mM NaCl, 0.02% sodium azide and 50% glycerol. Store at +4°C short term. Store at -20°C long term. Avoid freeze / thaw cycle.

**GRB7 Antibody - Protein Information****Name** GRB7**Function**

Adapter protein that interacts with the cytoplasmic domain of numerous receptor kinases and modulates down-stream signaling. Promotes activation of down-stream protein kinases, including STAT3, AKT1, MAPK1 and/or MAPK3. Promotes activation of HRAS. Plays a role in signal transduction in response to EGF. Plays a role in the regulation of cell proliferation and cell migration. Plays a role in the assembly and stability of RNA stress granules. Binds to the 5'UTR of target mRNA molecules and represses translation of target mRNA species, when not phosphorylated. Phosphorylation impairs RNA binding and promotes stress granule disassembly during recovery after cellular stress (By similarity).

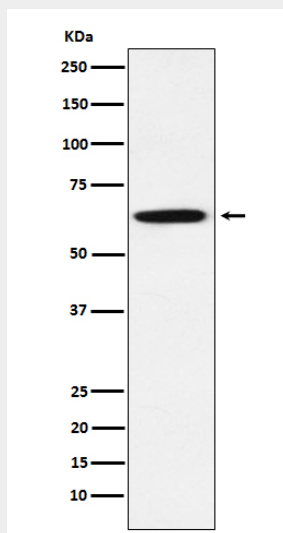
**Cellular Location**

Cytoplasm. Cell junction, focal adhesion. Cell membrane; Peripheral membrane protein; Cytoplasmic side. Cytoplasmic granule {ECO:0000250|UniProtKB:Q03160}. Cell projection. Note=Predominantly cytoplasmic. Detected in stress granules, where mRNA is stored under stress conditions {ECO:0000250|UniProtKB:Q03160}

**GRB7 Antibody - Protocols**

Provided below are standard protocols that you may find useful for product applications.

- [Western Blot](#)
- [Blocking Peptides](#)
- [Dot Blot](#)
- [Immunohistochemistry](#)
- [Immunofluorescence](#)
- [Immunoprecipitation](#)
- [Flow Cytometry](#)
- [Cell Culture](#)

**GRB7 Antibody - Images**

Western blot analysis of GRB7 expression in A431 cell lysate.