

**PBRM1 Antibody**  
**Rabbit mAb**  
**Catalog # AP92088**

## Specification

---

### PBRM1 Antibody - Product Information

Application	WB, IHC, FC, ICC
Primary Accession	<a href="#">Q86U86</a>
Reactivity	Rat
Clonality	Monoclonal

#### Other Names

BAF180; hPB1; PB1; Pbrm1; polybromo 1; Polybromo-1D;

Isotype	Rabbit IgG
Host	Rabbit
Calculated MW	192948 Da

### PBRM1 Antibody - Additional Information

Dilution	WB~~1:1000 IHC~~1:100~500 FC~~1:10~50 ICC~~N/A
Purification	Affinity-chromatography
Immunogen	A synthesized peptide derived from human PBRM1
Description	Involved in transcriptional activation and repression of select genes by chromatin remodeling (alteration of DNA-nucleosome topology). Act as a negative regulator of cell proliferation.
Storage Condition and Buffer	Rabbit IgG in phosphate buffered saline , pH 7.4, 150mM NaCl, 0.02% sodium azide and 50% glycerol. Store at +4°C short term. Store at -20°C long term. Avoid freeze / thaw cycle.

### PBRM1 Antibody - Protein Information

**Name** PBRM1

**Synonyms** BAF180, PB1

#### Function

Involved in transcriptional activation and repression of select genes by chromatin remodeling (alteration of DNA-nucleosome topology). Required for the stability of the SWI/SNF chromatin remodeling complex SWI/SNF-B (PBAF). Acts as a negative regulator of cell proliferation.

#### Cellular Location

Nucleus

**Tissue Location**

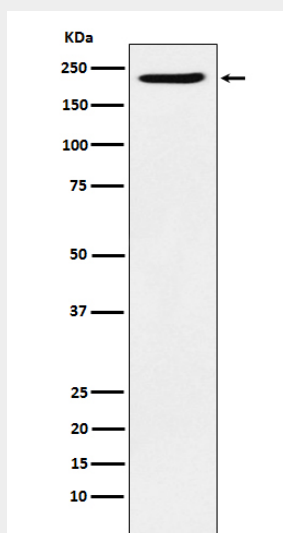
Widely expressed..

**PBRM1 Antibody - Protocols**

Provided below are standard protocols that you may find useful for product applications.

- [Western Blot](#)
- [Blocking Peptides](#)
- [Dot Blot](#)
- [Immunohistochemistry](#)
- [Immunofluorescence](#)
- [Immunoprecipitation](#)
- [Flow Cytometry](#)
- [Cell Culture](#)

**PBRM1 Antibody - Images**



Western blot analysis of PBRM1 expression in HeLa cell lysate.