

Brachyury Antibody
Rabbit mAb
Catalog # AP92097**Specification****Brachyury Antibody - Product Information**

Application	WB, IHC, FC, ICC, IP
Primary Accession	O15178
Reactivity	Rat
Clonality	Monoclonal
Other Names	
Brachyury homolog; Bry; Protein T; SAVA; TFT; T-box transcription factor T; TBXT; Brachyury protein;	
Isotype	Rabbit IgG
Host	Rabbit
Calculated MW	47443 Da

Brachyury Antibody - Additional Information

Dilution	WB~~1:1000 IHC~~1:100~500 FC~~1:10~50 ICC~~N/A IP~~N/A
Purification	Affinity-chromatography
Immunogen	A synthesized peptide derived from human Brachyury
Description	Involved in the transcriptional regulation of genes required for mesoderm formation and differentiation. Binds to a palindromic site (called T site) and activates gene transcription when bound to such a site.
Storage Condition and Buffer	Rabbit IgG in phosphate buffered saline , pH 7.4, 150mM NaCl, 0.02% sodium azide and 50% glycerol. Store at +4°C short term. Store at -20°C long term. Avoid freeze / thaw cycle.

Brachyury Antibody - Protein InformationName TBXT ([HGNC:11515](#))**Synonyms T****Function**

Involved in the transcriptional regulation of genes required for mesoderm formation and differentiation. Binds to a palindromic T site 5'-TTCACACCTAGGTGTGAA-3' DNA sequence and activates gene transcription when bound to such a site.

Cellular Location

Nucleus

Tissue Location

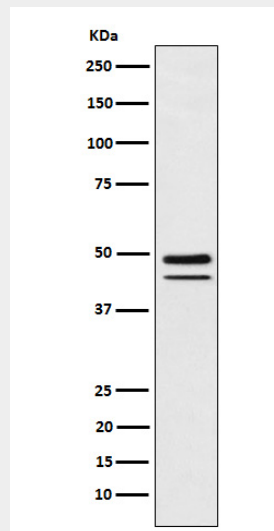
Detected in testis, but not in other, normal tissues. Detected in lung tumors (at protein level)

Brachyury Antibody - Protocols

Provided below are standard protocols that you may find useful for product applications.

- [Western Blot](#)
- [Blocking Peptides](#)
- [Dot Blot](#)
- [Immunohistochemistry](#)
- [Immunofluorescence](#)
- [Immunoprecipitation](#)
- [Flow Cytometry](#)
- [Cell Culture](#)

Brachyury Antibody - Images



Western blot analysis of Brachyury expression in MUG-Chor1 (human sacral bone chordoma) cell lysate.