

NDUFS4 Antibody
Rabbit mAb
Catalog # AP92100**Specification**

NDUFS4 Antibody - Product Information

Application	WB, IHC, FC, ICC, IP
Primary Accession	O43181
Reactivity	Rat
Clonality	Monoclonal
Other Names	
AQDQ; CI 18; CI AQDQ; Complex I 18 kDa; NDUFS4;	

Isotype	Rabbit IgG
Host	Rabbit
Calculated MW	20108 Da

NDUFS4 Antibody - Additional Information

Dilution	WB~~1:1000 IHC~~1:100~500 FC~~1:10~50 ICC~~N/A IP~~N/A
Purification	Affinity-chromatography
Immunogen	A synthesized peptide derived from human NDUFS4
Description	Accessory subunit of the mitochondrial membrane respiratory chain NADH dehydrogenase (Complex I), that is believed not to be involved in catalysis. Complex I functions in the transfer of electrons from NADH to the respiratory chain. The immediate electron acceptor for the enzyme is believed to be ubiquinone. Rabbit IgG in phosphate buffered saline , pH 7.4, 150mM NaCl, 0.02% sodium azide and 50% glycerol. Store at +4°C short term. Store at -20°C long term. Avoid freeze / thaw cycle.
Storage Condition and Buffer	

NDUFS4 Antibody - Protein Information**Name** NDUFS4**Function**

Accessory subunit of the mitochondrial membrane respiratory chain NADH dehydrogenase (Complex I), that is believed not to be involved in catalysis. Complex I functions in the transfer of electrons from NADH to the respiratory chain. The immediate electron acceptor for the enzyme is

believed to be ubiquinone.

Cellular Location

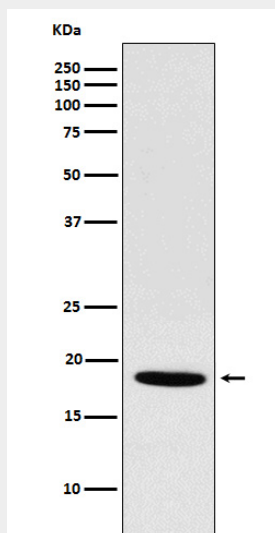
Mitochondrion inner membrane; Peripheral membrane protein; Matrix side. Note=The interaction with BCAP31 mediates mitochondria localization.

NDUFS4 Antibody - Protocols

Provided below are standard protocols that you may find useful for product applications.

- [Western Blot](#)
- [Blocking Peptides](#)
- [Dot Blot](#)
- [Immunohistochemistry](#)
- [Immunofluorescence](#)
- [Immunoprecipitation](#)
- [Flow Cytometry](#)
- [Cell Culture](#)

NDUFS4 Antibody - Images



Western blot analysis of NDUFS4 expression in Rat heart lysate.