

**RFA2 Antibody**  
**Rabbit mAb**  
**Catalog # AP92103****Specification**

---

**RFA2 Antibody - Product Information**

Application	<b>WB, IHC, IP</b>
Primary Accession	<a href="#">P15927</a>
Reactivity	<b>Rat</b>
Clonality	<b>Monoclonal</b>
<b>Other Names</b>	
p32; p34; REPA2; Replication factor A protein 2; Rf-A2; RFA; RP-A p32; RP-A p34; RP21C; RPA; Rpa2; RPA32; RPA34; RpLP1; RpP2;	
Isotype	<b>Rabbit IgG</b>
Host	<b>Rabbit</b>
Calculated MW	<b>29247 Da</b>

**RFA2 Antibody - Additional Information**

Dilution	<b>WB~~1:1000</b> <b>IHC~~1:100~500</b> <b>IP~~N/A</b>
Purification	<b>Affinity-chromatography</b>
Immunogen	<b>A synthesized peptide derived from human RFA2</b>
Description	<b>Required for DNA recombination, repair and replication. The activity of RP-A is mediated by single-stranded DNA binding and protein interactions.</b>
Storage Condition and Buffer	<b>Rabbit IgG in phosphate buffered saline , pH 7.4, 150mM NaCl, 0.02% sodium azide and 50% glycerol. Store at +4°C short term. Store at -20°C long term. Avoid freeze / thaw cycle.</b>

**RFA2 Antibody - Protein Information****Name** RPA2**Synonyms** REPA2, RPA32, RPA34**Function**

As part of the heterotrimeric replication protein A complex (RPA/RP-A), binds and stabilizes single-stranded DNA intermediates that form during DNA replication or upon DNA stress. It prevents their reannealing and in parallel, recruits and activates different proteins and complexes involved in DNA metabolism. Thereby, it plays an essential role both in DNA replication and the cellular response to DNA damage. In the cellular response to DNA damage, the RPA complex controls DNA repair and DNA damage checkpoint activation. Through recruitment of ATRIP

activates the ATR kinase a master regulator of the DNA damage response. It is required for the recruitment of the DNA double-strand break repair factors RAD51 and RAD52 to chromatin in response to DNA damage. Also recruits to sites of DNA damage proteins like XPA and XPG that are involved in nucleotide excision repair (BER) probably through interaction with UNG. Also recruits SMARCAL1/HARP, which is involved in replication fork restart, to sites of DNA damage. May also play a role in telomere maintenance. RPA stimulates 5'-3' helicase activity of BRIP1/FANCD1 (PubMed: <http://www.uniprot.org/citations/17596542> target="\_blank">17596542</a>).

#### Cellular Location

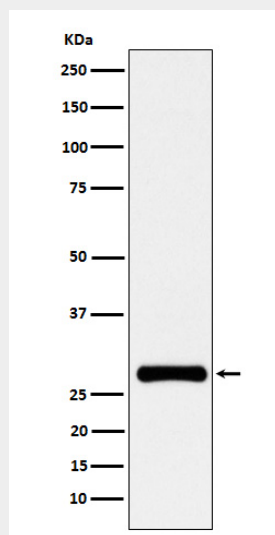
Nucleus. Nucleus, PML body. Note=Redistributes to discrete nuclear foci upon DNA damage in an ATR-dependent manner

#### RFA2 Antibody - Protocols

Provided below are standard protocols that you may find useful for product applications.

- [Western Blot](#)
- [Blocking Peptides](#)
- [Dot Blot](#)
- [Immunohistochemistry](#)
- [Immunofluorescence](#)
- [Immunoprecipitation](#)
- [Flow Cytometry](#)
- [Cell Culture](#)

#### RFA2 Antibody - Images



Western blot analysis of RFA2 expression in HeLa cell lysate.