

Aminopeptidase A / CD249 Antibody
Rabbit mAb
Catalog # AP92107**Specification**

Aminopeptidase A / CD249 Antibody - Product Information

Application	WB, IHC
Primary Accession	Q07075
Clonality	Monoclonal
Other Names	
Aminopeptidase A; APA; bp1; CD249; EAP; Enpep; Gp160; Ly51;	
Isotype	Rabbit IgG
Host	Rabbit
Calculated MW	109244 Da

Aminopeptidase A / CD249 Antibody - Additional Information

Dilution	WB~~1:1000 IHC~~1:100~500
Purification	Affinity-chromatography
Immunogen	A synthesized peptide derived from human Aminopeptidase A / CD249
Description	Appears to have a role in the catabolic pathway of the renin-angiotensin system. Probably plays a role in regulating growth and differentiation of early B-lineage cells.
Storage Condition and Buffer	Rabbit IgG in phosphate buffered saline , pH 7.4, 150mM NaCl, 0.02% sodium azide and 50% glycerol. Store at +4°C short term. Store at -20°C long term. Avoid freeze / thaw cycle.

Aminopeptidase A / CD249 Antibody - Protein Information**Name** ENPEP**Function**

Regulates central hypertension through its calcium-modulated preference to cleave N-terminal acidic residues from peptides such as angiotensin II.

Cellular Location

Cell membrane; Single-pass type II membrane protein

Tissue Location

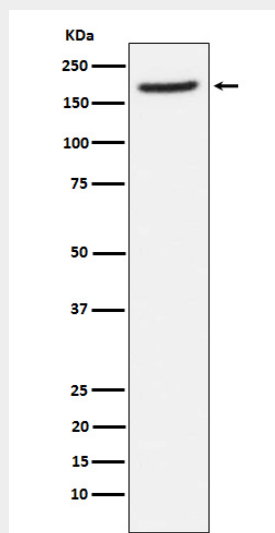
Expressed in choriocarcinoma cancer cell lines (at protein level) (PubMed:10692253). Expressed by epithelial cells of the proximal tubule cells and the glomerulus of the nephron. Also found in a variety of other tissues.

Aminopeptidase A / CD249 Antibody - Protocols

Provided below are standard protocols that you may find useful for product applications.

- [Western Blot](#)
- [Blocking Peptides](#)
- [Dot Blot](#)
- [Immunohistochemistry](#)
- [Immunofluorescence](#)
- [Immunoprecipitation](#)
- [Flow Cytometry](#)
- [Cell Culture](#)

Aminopeptidase A / CD249 Antibody - Images



Western blot analysis of Aminopeptidase A / CD249 expression in human fetal lung lysate.