

RNF40 Antibody
Rabbit mAb
Catalog # AP92108**Specification**

RNF40 Antibody - Product Information

Application	WB, IHC, IP
Primary Accession	O75150
Reactivity	Rat
Clonality	Monoclonal
Other Names	
BRE 1B; BRE1 B; BRE1B; RBP95; Rnf40; STARING;	

Isotype	Rabbit IgG
Host	Rabbit
Calculated MW	113678 Da

RNF40 Antibody - Additional Information

Dilution	WB~~1:1000 IHC~~1:100~500 IP~~N/A
Purification	Affinity-chromatography
Immunogen	A synthesized peptide derived from human RNF40
Description	E3 ubiquitin-protein ligase that mediates monoubiquitination of 'Lys-120' of histone H2B (H2BK120ub1). H2BK120ub1 gives a specific tag for epigenetic transcriptional activation and is also prerequisite for histone H3 'Lys-4' and 'Lys-79' methylation (H3K4me and H3K79me, respectively).
Storage Condition and Buffer	Rabbit IgG in phosphate buffered saline , pH 7.4, 150mM NaCl, 0.02% sodium azide and 50% glycerol. Store at +4°C short term. Store at -20°C long term. Avoid freeze / thaw cycle.

RNF40 Antibody - Protein Information**Name** RNF40**Synonyms** BRE1B, KIAA0661**Function**

Component of the RNF20/40 E3 ubiquitin-protein ligase complex that mediates monoubiquitination of 'Lys-120' of histone H2B (H2BK120ub1). H2BK120ub1 gives a specific tag for epigenetic transcriptional activation and is also prerequisite for histone H3 'Lys-4' and 'Lys-79' methylation (H3K4me and H3K79me, respectively). It thereby plays a central role in histone code and gene

regulation. The RNF20/40 complex forms a H2B ubiquitin ligase complex in cooperation with the E2 enzyme UBE2A or UBE2B; reports about the cooperation with UBE2E1/UBCH are contradictory. Required for transcriptional activation of Hox genes.

Cellular Location

Nucleus.

Tissue Location

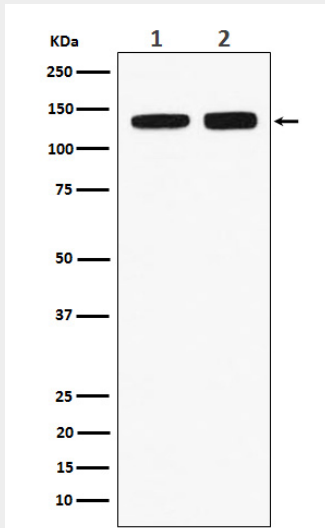
Ubiquitously expressed. Expressed at higher level in testis, heart and pancreas, while it is only weakly expressed in lung, skeletal muscle and small intestine

RNF40 Antibody - Protocols

Provided below are standard protocols that you may find useful for product applications.

- [Western Blot](#)
- [Blocking Peptides](#)
- [Dot Blot](#)
- [Immunohistochemistry](#)
- [Immunofluorescence](#)
- [Immunoprecipitation](#)
- [Flow Cytometry](#)
- [Cell Culture](#)

RNF40 Antibody - Images



Western blot analysis of RNF40 expression in (1) HeLa cell lysate; (2) RAW264.7 cell lysate.