

**HB EGF Antibody**  
**Rabbit mAb**  
**Catalog # AP92112****Specification**

---

**HB EGF Antibody - Product Information**

Application	WB
Primary Accession	<a href="#">Q99075</a>
Reactivity	Rat
Clonality	Monoclonal
<b>Other Names</b>	
DTR; DTS; DTSF; HB-EGF; HBEGF; HEGFL;	
Isotype	Rabbit IgG
Host	Rabbit
Calculated MW	23067 Da

**HB EGF Antibody - Additional Information**

Dilution	WB~~1:1000
Purification	Affinity-chromatography
Immunogen	A synthesized peptide derived from human HB EGF
Description	May be involved in macrophage-mediated cellular proliferation. It is mitogenic for fibroblasts and smooth muscle but not endothelial cells.
Storage Condition and Buffer	Rabbit IgG in phosphate buffered saline , pH 7.4, 150mM NaCl, 0.02% sodium azide and 50% glycerol. Store at +4°C short term. Store at -20°C long term. Avoid freeze / thaw cycle.

**HB EGF Antibody - Protein Information****Name** HBEGF**Synonyms** DTR, DTS, HEGFL**Function**

Growth factor that mediates its effects via EGFR, ERBB2 and ERBB4. Required for normal cardiac valve formation and normal heart function. Promotes smooth muscle cell proliferation. May be involved in macrophage-mediated cellular proliferation. It is mitogenic for fibroblasts, but not endothelial cells. It is able to bind EGF receptor/EGFR with higher affinity than EGF itself and is a far more potent mitogen for smooth muscle cells than EGF. Also acts as a diphtheria toxin receptor.

**Cellular Location**

[Heparin-binding EGF-like growth factor]: Secreted, extracellular space. Note=Mature HB-EGF is

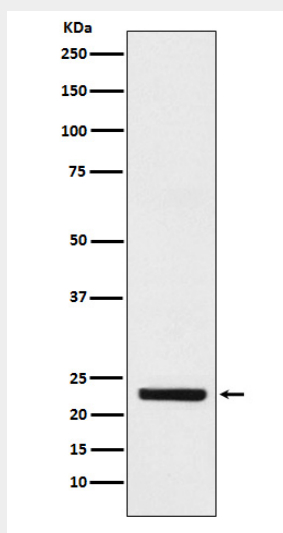
released into the extracellular space and probably binds to a receptor

### HB EGF Antibody - Protocols

Provided below are standard protocols that you may find useful for product applications.

- [Western Blot](#)
- [Blocking Peptides](#)
- [Dot Blot](#)
- [Immunohistochemistry](#)
- [Immunofluorescence](#)
- [Immunoprecipitation](#)
- [Flow Cytometry](#)
- [Cell Culture](#)

### HB EGF Antibody - Images



Western blot analysis of HB EGF expression in K562 cell lysate.