

Cenexin1 / ODF2 Antibody
Rabbit mAb
Catalog # AP92114**Specification**

Cenexin1 / ODF2 Antibody - Product Information

Application	WB, FC
Primary Accession	Q5BJF6
Clonality	Monoclonal
Other Names	
Cenexin 1; Cenexin; CT134; KKT4; ODF 2; ODF 84; odf2; ODF2/1; ODF2/2; ODF84;	
Isotype	Rabbit IgG
Host	Rabbit
Calculated MW	95401 Da

Cenexin1 / ODF2 Antibody - Additional Information

Dilution	WB~~1:1000 FC~~1:10~50
Purification	Affinity-chromatography
Immunogen	A synthesized peptide derived from human Cenexin1 / ODF2
Description	Seems to be a major component of sperm tail outer dense fibers (ODF). ODFs are filamentous structures located on the outside of the axoneme in the midpiece and principal piece of the mammalian sperm tail and may help to maintain the passive elastic structures and elastic recoil of the sperm tail.
Storage Condition and Buffer	Rabbit IgG in phosphate buffered saline , pH 7.4, 150mM NaCl, 0.02% sodium azide and 50% glycerol. Store at +4°C short term. Store at -20°C long term. Avoid freeze / thaw cycle.

Cenexin1 / ODF2 Antibody - Protein Information**Name** ODF2**Function**

Seems to be a major component of sperm tail outer dense fibers (ODF). ODFs are filamentous structures located on the outside of the axoneme in the midpiece and principal piece of the mammalian sperm tail and may help to maintain the passive elastic structures and elastic recoil of the sperm tail. May have a modulating influence on sperm motility. Functions as a general scaffold protein that is specifically localized at the distal/subdistal appendages of mother centrioles. Component of the centrosome matrix required for the localization of PLK1 and NIN to the centrosomes. Required for the formation and/or maintenance of normal CETN1 assembly.

Cellular Location

Cytoplasm, cytoskeleton, microtubule organizing center, centrosome. Cell projection, cilium {ECO:0000250|UniProtKB:A3KGV1}. Cytoplasm, cytoskeleton, microtubule organizing center, centrosome, centriole Cytoplasm, cytoskeleton, spindle pole {ECO:0000250|UniProtKB:A3KGV1} Cell projection, cilium, flagellum {ECO:0000250|UniProtKB:A3KGV1} Note=Localized at the microtubule organizing centers in interphase and spindle poles in mitosis. Localized at the distal/subdistal appendages of mother centrioles. {ECO:0000250|UniProtKB:A3KGV1}

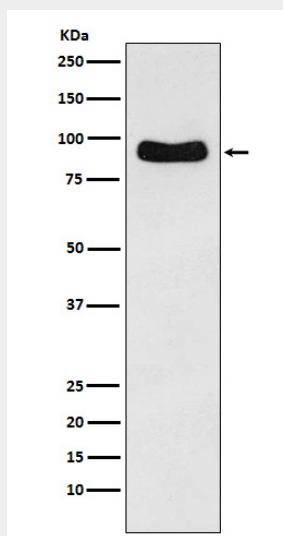
Tissue Location

Testis-specific (at protein level). Highly expressed in cytoplasm of step 2 round spermatids. Detected in the middle piece and extends to about half the principal piece of the sperm tails.

Cenexin1 / ODF2 Antibody - Protocols

Provided below are standard protocols that you may find useful for product applications.

- [Western Blot](#)
- [Blocking Peptides](#)
- [Dot Blot](#)
- [Immunohistochemistry](#)
- [Immunofluorescence](#)
- [Immunoprecipitation](#)
- [Flow Cytometry](#)
- [Cell Culture](#)

Cenexin1 / ODF2 Antibody - Images

Western blot analysis of Cenexin1/ODF2 expression in HeLa cell lysate.