

FOXL1 Antibody (Center)
Affinity Purified Rabbit Polyclonal Antibody (Pab)
Catalog # AP9211c**Specification**

FOXL1 Antibody (Center) - Product Information

Application	WB,E
Primary Accession	Q12952
Other Accession	Q64731
Reactivity	Human, Mouse
Host	Rabbit
Clonality	Polyclonal
Isotype	Rabbit IgG
Calculated MW	36490
Antigen Region	94-119

FOXL1 Antibody (Center) - Additional Information**Gene ID** 2300**Other Names**

Forkhead box protein L1, Forkhead-related protein FKHL11, Forkhead-related transcription factor 7, FREAC-7, FOXL1, FKHL11, FREAC7

Target/Specificity

This FOXL1 antibody is generated from rabbits immunized with a KLH conjugated synthetic peptide between 94-119 amino acids from the Central region of human FOXL1.

Dilution

WB~~1:1000

E~~Use at an assay dependent concentration.

Format

Purified polyclonal antibody supplied in PBS with 0.09% (W/V) sodium azide. This antibody is purified through a protein A column, followed by peptide affinity purification.

Storage

Maintain refrigerated at 2-8°C for up to 2 weeks. For long term storage store at -20°C in small aliquots to prevent freeze-thaw cycles.

Precautions

FOXL1 Antibody (Center) is for research use only and not for use in diagnostic or therapeutic procedures.

FOXL1 Antibody (Center) - Protein Information**Name** FOXL1

Synonyms FKHL11, FREAC7

Function Transcription factor required for proper proliferation and differentiation in the gastrointestinal epithelium. Target gene of the hedgehog (Hh) signaling pathway via GLI2 and GLI3 transcription factors (By similarity).

Cellular Location

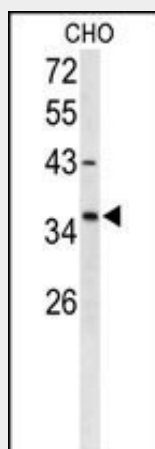
Nucleus.

FOXL1 Antibody (Center) - Protocols

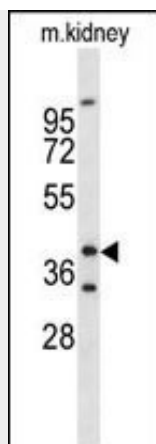
Provided below are standard protocols that you may find useful for product applications.

- [Western Blot](#)
- [Blocking Peptides](#)
- [Dot Blot](#)
- [Immunohistochemistry](#)
- [Immunofluorescence](#)
- [Immunoprecipitation](#)
- [Flow Cytometry](#)
- [Cell Culture](#)

FOXL1 Antibody (Center) - Images



Western blot analysis of FOXL1 Antibody (Center) (Cat. #AP9211c) in CHO cell line lysates (35ug/lane).FOXL1 (arrow) was detected using the purified Pab;



Western blot analysis of FOXL1 Antibody (Center) (Cat. #AP9211c) in mouse kidney tissue lysates (35ug/lane).FOXL1 (arrow) was detected using the purified Pab.

FOXL1 Antibody (Center) - Background

The forkhead domain is a 100-amino acid monomeric DNA binding motif originally identified as a region of homology between the *Drosophila* forkhead protein and rat HNF3. Pierrou et al. (1994) identified 7 human genes containing forkhead domains and designated them forkhead related activators (FREAC) 1 through 7.

FOXL1 Antibody (Center) - References

Rivadeneira,F., et.al., Nat. Genet. 41 (11), 1199-1206 (2009)
Ferrell,R.E., et.al., Lymphat Res Biol 6 (2), 69-76 (2008)
Hassel,S., et.al., Proteomics 4 (5), 1346-1358 (2004)