

RAB27A Antibody
Rabbit mAb
Catalog # AP92133**Specification**

RAB27A Antibody - Product Information

Application **WB, FC, ICC, IP**
Primary Accession **[P51159](#)**
Clonality **Monoclonal**
Other Names
GS2; RAM; RAB27; HsT18676;

Isotype **Rabbit IgG**
Host **Rabbit**
Calculated MW **24868 Da**

RAB27A Antibody - Additional Information

Dilution **WB~~1:1000**
FC~~1:10~50
ICC~~N/A
IP~~N/A
Purification **Affinity-chromatography**
Immunogen **A synthesized peptide derived from human RAB27A**
Description **Plays a role in cytotoxic granule exocytosis in lymphocytes. Required for both granule maturation and granule docking and priming at the immunologic synapse.**
Storage Condition and Buffer **Rabbit IgG in phosphate buffered saline , pH 7.4, 150mM NaCl, 0.02% sodium azide and 50% glycerol. Store at +4°C short term. Store at -20°C long term. Avoid freeze / thaw cycle.**

RAB27A Antibody - Protein Information**Name** RAB27A**Synonyms** RAB27**Function**

Small GTPase which cycles between active GTP-bound and inactive GDP-bound states. In its active state, binds to a variety of effector proteins to regulate homeostasis of late endocytic pathway, including endosomal positioning, maturation and secretion (PubMed:30771381). Plays a role in cytotoxic granule exocytosis in lymphocytes. Required for both granule maturation and granule docking and priming at the immunologic synapse.

Cellular Location

Membrane; Lipid-anchor. Melanosome. Late endosome. Lysosome. Note=Identified by mass spectrometry in melanosome fractions from stage I to stage IV (PubMed:12643545, PubMed:17081065). Localizes to endosomal exocytic vesicles (PubMed:17237785).

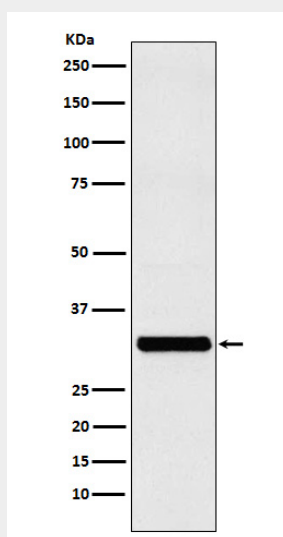
Tissue Location

Found in all the examined tissues except in brain. Low expression was found in thymus, kidney, muscle and placenta Detected in melanocytes, and in most tumor cell lines examined Expressed in cytotoxic T-lymphocytes (CTL) and mast cells

RAB27A Antibody - Protocols

Provided below are standard protocols that you may find useful for product applications.

- [Western Blot](#)
- [Blocking Peptides](#)
- [Dot Blot](#)
- [Immunohistochemistry](#)
- [Immunofluorescence](#)
- [Immunoprecipitation](#)
- [Flow Cytometry](#)
- [Cell Culture](#)

RAB27A Antibody - Images

Western blot analysis of RAB27A expression in MCF-7 cell lysate.