

**Hex Antibody**  
**Rabbit mAb**  
**Catalog # AP92135**

## Specification

---

### Hex Antibody - Product Information

Application	WB, IP
Primary Accession	<a href="#">Q03014</a>
Clonality	Monoclonal
<b>Other Names</b>	
HEX; HHEX; HMPH; PRH; PRHX;	
Isotype	Rabbit IgG
Host	Rabbit
Calculated MW	30022 Da

### Hex Antibody - Additional Information

Dilution	WB~~1:1000 IP~~N/A
Purification	Affinity-chromatography
Immunogen	A synthesized peptide derived from human Hex
Description	Recognizes the DNA sequence 5'-ATTAA-3'. Transcriptional repressor. May play a role in hematopoietic differentiation. Establishes anterior identity at two levels; acts early to enhance canonical WNT-signaling by repressing expression of TLE4, and acts later to inhibit NODAL-signaling by directly targeting NODAL.
Storage Condition and Buffer	Rabbit IgG in phosphate buffered saline , pH 7.4, 150mM NaCl, 0.02% sodium azide and 50% glycerol. Store at +4°C short term. Store at -20°C long term. Avoid freeze / thaw cycle.

### Hex Antibody - Protein Information

**Name** HHEX

**Synonyms** HEX, PRH, PRHX

#### Function

Recognizes the DNA sequence 5'-ATTAA-3' (By similarity). Transcriptional repressor (By similarity). Activator of WNT-mediated transcription in conjunction with CTNNB1 (PubMed:<a href="http://www.uniprot.org/citations/20028982" target="\_blank">20028982</a>). Establishes anterior identity at two levels; acts early to enhance canonical WNT- signaling by repressing

expression of TLE4, and acts later to inhibit NODAL-signaling by directly targeting NODAL (By similarity). Inhibits EIF4E-mediated mRNA nuclear export (PubMed:<a href="http://www.uniprot.org/citations/12554669" target="\_blank">12554669</a>). May play a role in hematopoietic differentiation (PubMed:<a href="http://www.uniprot.org/citations/8096636" target="\_blank">8096636</a>).

#### Cellular Location

Nucleus {ECO:0000250|UniProtKB:P43120}. Nucleus, nuclear body. Cytoplasm

#### Tissue Location

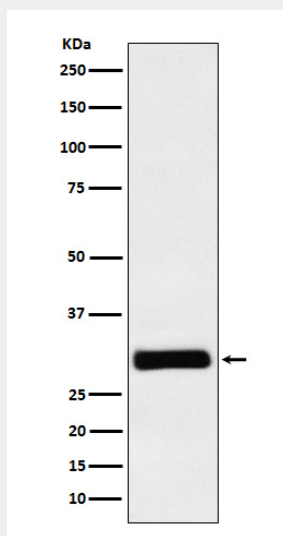
Liver and promyelocytic leukemia cell line HL-60.

### Hex Antibody - Protocols

Provided below are standard protocols that you may find useful for product applications.

- [Western Blot](#)
- [Blocking Peptides](#)
- [Dot Blot](#)
- [Immunohistochemistry](#)
- [Immunofluorescence](#)
- [Immunoprecipitation](#)
- [Flow Cytometry](#)
- [Cell Culture](#)

### Hex Antibody - Images



Western blot analysis of Hex expression in K562 cell lysate.