

**EBF1 Antibody**  
**Rabbit mAb**  
**Catalog # AP92139**

## Specification

---

### EBF1 Antibody - Product Information

Application	WB
Primary Accession	<a href="#">Q9UH73</a>
Clonality	Monoclonal
<b>Other Names</b>	
COE1; EBF; Ebf1; O/E 1; OE1; OLF1;	
Isotype	Rabbit IgG
Host	Rabbit
Calculated MW	64464 Da

### EBF1 Antibody - Additional Information

Dilution	WB~~1:1000
Purification	Affinity-chromatography
Immunogen	A synthesized peptide derived from human EBF1
Description	Transcriptional activator which recognizes variations of the palindromic sequence 5'-ATTCCCNNGGGAATT-3'.
Storage Condition and Buffer	Rabbit IgG in phosphate buffered saline , pH 7.4, 150mM NaCl, 0.02% sodium azide and 50% glycerol. Store at +4°C short term. Store at -20°C long term. Avoid freeze / thaw cycle.

### EBF1 Antibody - Protein Information

**Name** EBF1

**Synonyms** COE1, EBF

#### Function

Key pioneer transcription factor of B-cell specification and commitment (PubMed:<a href="http://www.uniprot.org/citations/27807034" target="\_blank">27807034</a>). Recognizes variations of the palindromic sequence 5'-ATTCCCNNGGGAATT-3'. Operates in a transcription factor network to activate B-cell-specific genes and repress genes associated with alternative cell fates. For instance, positively regulates many B- cell specific genes including BCR or CD40 while repressing genes that direct cells into alternative lineages, including GATA3 and TCF7 for the T-cell lineage. In addition to its role during lymphopoiesis, controls the thermogenic gene program in adipocytes during development and in response to environmental cold (By similarity).

#### Cellular Location

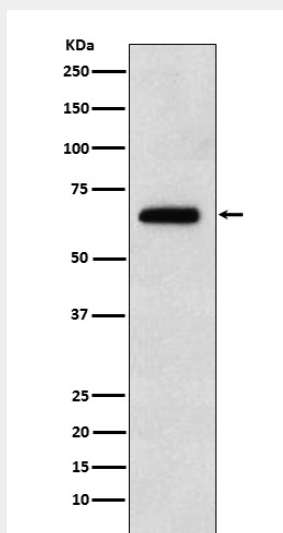
Nucleus.

## EBF1 Antibody - Protocols

Provided below are standard protocols that you may find useful for product applications.

- [Western Blot](#)
- [Blocking Peptides](#)
- [Dot Blot](#)
- [Immunohistochemistry](#)
- [Immunofluorescence](#)
- [Immunoprecipitation](#)
- [Flow Cytometry](#)
- [Cell Culture](#)

## EBF1 Antibody - Images



Western blot analysis of EBF1 expression in Raji cell lysate.