

Dlx5 Antibody
Rabbit mAb
Catalog # AP92140

Specification

Dlx5 Antibody - Product Information

Application	WB, IHC, ICC, IP
Primary Accession	P56178
Reactivity	Rat
Clonality	Monoclonal

Other Names

Distal less homeo box 5; Dlx 5; Homeo box protein DLX 5;

Isotype	Rabbit IgG
Host	Rabbit
Calculated MW	31540 Da

Dlx5 Antibody - Additional Information

Dilution	WB~~1:1000 IHC~~1:100~500 ICC~~N/A IP~~N/A
Purification	Affinity-chromatography
Immunogen	A synthesized peptide derived from human Dlx5
Description	Transcriptional factor involved in bone development. Acts as an immediate early BMP-responsive transcriptional activator essential for osteoblast differentiation. Stimulates ALPL promoter activity in a RUNX2-independent manner during osteoblast differentiation. Stimulates SP7 promoter activity during osteoblast differentiation.
Storage Condition and Buffer	Rabbit IgG in phosphate buffered saline , pH 7.4, 150mM NaCl, 0.02% sodium azide and 50% glycerol. Store at +4°C short term. Store at -20°C long term. Avoid freeze / thaw cycle.

Dlx5 Antibody - Protein Information

Name DLX5

Function

Transcriptional factor involved in bone development. Acts as an immediate early BMP-responsive transcriptional activator essential for osteoblast differentiation. Stimulates ALPL promoter activity in a RUNX2-independent manner during osteoblast differentiation. Stimulates SP7 promoter

activity during osteoblast differentiation. Promotes cell proliferation by up-regulating MYC promoter activity. Involved as a positive regulator of both chondrogenesis and chondrocyte hypertrophy in the endochondral skeleton. Binds to the homeodomain-response element of the ALPL and SP7 promoter. Binds to the MYC promoter. Requires the 5'-TAATTA-3' consensus sequence for DNA-binding.

Cellular Location

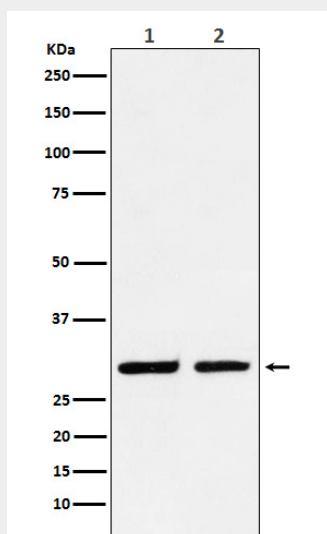
Nucleus {ECO:0000255|PROSITE-ProRule:PRU00108}.

Dlx5 Antibody - Protocols

Provided below are standard protocols that you may find useful for product applications.

- [Western Blot](#)
- [Blocking Peptides](#)
- [Dot Blot](#)
- [Immunohistochemistry](#)
- [Immunofluorescence](#)
- [Immunoprecipitation](#)
- [Flow Cytometry](#)
- [Cell Culture](#)

Dlx5 Antibody - Images



Western blot analysis of Dlx5 expression in (1) HeLa cell lysate; (2) RAW264.7 cell lysate.