

GDF3 Antibody
Rabbit mAb
Catalog # AP92141**Specification**

GDF3 Antibody - Product Information

Application	WB
Primary Accession	Q9NR23
Reactivity	Rat
Clonality	Monoclonal
Other Names	
ecat9; GDF3; KFS3; MCOP7; Vgr2;	
Isotype	Rabbit IgG
Host	Rabbit
Calculated MW	41387 Da

GDF3 Antibody - Additional Information

Dilution	WB~~1:1000
Purification	Affinity-chromatography
Immunogen	A synthesized peptide derived from human GDF3
Description	Growth factor involved in early embryonic development and adipose-tissue homeostasis. During embryogenesis controls formation of anterior visceral endoderm and mesoderm and the establishment of anterior-posterior identity through a receptor complex comprising the receptor ACVR1B and the coreceptor TDGF1/Cripto (By similarity). Rabbit IgG in phosphate buffered saline , pH 7.4, 150mM NaCl, 0.02% sodium azide and 50% glycerol. Store at +4°C short term. Store at -20°C long term. Avoid freeze / thaw cycle.
Storage Condition and Buffer	

GDF3 Antibody - Protein Information**Name** GDF3**Function**

Growth factor involved in early embryonic development and adipose-tissue homeostasis. During embryogenesis controls formation of anterior visceral endoderm and mesoderm and the establishment of anterior-posterior identity through a receptor complex comprising the receptor ACVR1B and the coreceptor CRIPTO (By similarity). Regulates adipose-tissue homeostasis and energy balance under nutrient overload in part by signaling through the receptor complex based on ACVR1C and CRIPTO/Cripto (PubMed:<a href="http://www.uniprot.org/citations/21805089"

target="_blank">21805089).

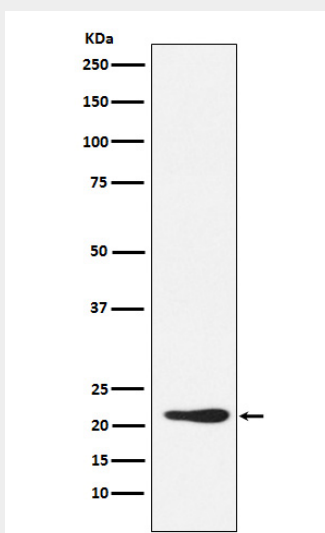
Cellular Location

Secreted. Cytoplasm. Note=Mainly accumulated in the cytoplasm

GDF3 Antibody - Protocols

Provided below are standard protocols that you may find useful for product applications.

- [Western Blot](#)
- [Blocking Peptides](#)
- [Dot Blot](#)
- [Immunohistochemistry](#)
- [Immunofluorescence](#)
- [Immunoprecipitation](#)
- [Flow Cytometry](#)
- [Cell Culture](#)

GDF3 Antibody - Images

Western blot analysis of GDF3 expression in 293T cell lysate.