

BMP6 Antibody
Rabbit mAb
Catalog # AP92149**Specification****BMP6 Antibody - Product Information**

Application	WB, IHC, FC, ICC
Primary Accession	P22004
Reactivity	Rat
Clonality	Monoclonal
Other Names	
Bmp6; DVR6; VGR; VGR1;	

Isotype	Rabbit IgG
Host	Rabbit
Calculated MW	57226 Da

BMP6 Antibody - Additional Information

Dilution	WB~~1:1000 IHC~~1:100~500 FC~~1:10~50 ICC~~N/A
Purification	Affinity-chromatography
Immunogen	A synthesized peptide derived from human BMP6
Description	Induces cartilage and bone formation.
Storage Condition and Buffer	Rabbit IgG in phosphate buffered saline , pH 7.4, 150mM NaCl, 0.02% sodium azide and 50% glycerol. Store at +4°C short term. Store at -20°C long term. Avoid freeze / thaw cycle.

BMP6 Antibody - Protein Information**Name** BMP6**Synonyms** VGR**Function**

Growth factor of the TGF-beta superfamily that plays essential roles in many developmental processes including cartilage and bone formation (PubMed:31019025). Also plays an important role in the regulation of HAMP/hepcidin expression and iron metabolism by acting as a ligand for hemojuvelin/HJV (PubMed:26582087). Also acts to promote expression of HAMP, potentially via the interaction with its receptor BMPRI1A/ALK3 (PubMed:30097509, PubMed:31800957). Initiates the

canonical BMP signaling cascade by associating with type I receptor ACVR1 and type II receptor ACVR2B (PubMed:18070108). In turn, ACVR1 propagates signal by phosphorylating SMAD1/5/8 that travel to the nucleus and act as activators and repressors of transcription of target. Can also signal through non-canonical pathway such as TAZ-Hippo signaling cascade to modulate VEGF signaling by regulating VEGFR2 expression (PubMed:33021694).

Cellular Location

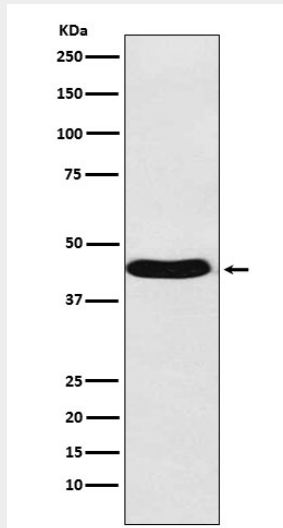
Secreted.

BMP6 Antibody - Protocols

Provided below are standard protocols that you may find useful for product applications.

- [Western Blot](#)
- [Blocking Peptides](#)
- [Dot Blot](#)
- [Immunohistochemistry](#)
- [Immunofluorescence](#)
- [Immunoprecipitation](#)
- [Flow Cytometry](#)
- [Cell Culture](#)

BMP6 Antibody - Images



Western blot analysis of BMP6 expression in Saos-2 cell lysate.