

PCB Antibody
Rabbit mAb
Catalog # AP92150**Specification**

PCB Antibody - Product Information

Application	WB, ICC
Primary Accession	P11498
Reactivity	Rat
Clonality	Monoclonal
Other Names	
PC; PCB; Pcx; Pyruvate carboxylase;	
Isotype	Rabbit IgG
Host	Rabbit
Calculated MW	129634 Da

PCB Antibody - Additional Information

Dilution	WB~~1:1000 ICC~~N/A
Purification	Affinity-chromatography
Immunogen	A synthesized peptide derived from human PCB
Description	Pyruvate carboxylase catalyzes a 2-step reaction, involving the ATP-dependent carboxylation of the covalently attached biotin in the first step and the transfer of the carboxyl group to pyruvate in the second.
Storage Condition and Buffer	Rabbit IgG in phosphate buffered saline , pH 7.4, 150mM NaCl, 0.02% sodium azide and 50% glycerol. Store at +4°C short term. Store at -20°C long term. Avoid freeze / thaw cycle.

PCB Antibody - Protein Information**Name** PC ([HGNC:8636](#))**Function**

Pyruvate carboxylase catalyzes a 2-step reaction, involving the ATP-dependent carboxylation of the covalently attached biotin in the first step and the transfer of the carboxyl group to pyruvate in the second. Catalyzes in a tissue specific manner, the initial reactions of glucose (liver, kidney) and lipid (adipose tissue, liver, brain) synthesis from pyruvate.

Cellular Location

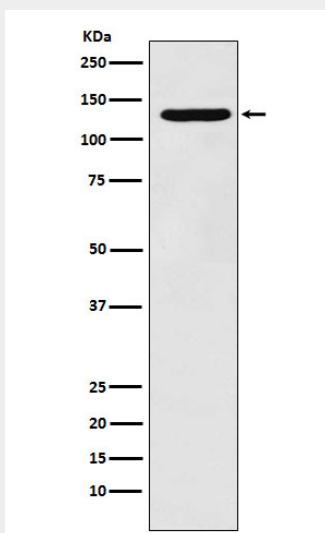
Mitochondrion matrix

PCB Antibody - Protocols

Provided below are standard protocols that you may find useful for product applications.

- [Western Blot](#)
- [Blocking Peptides](#)
- [Dot Blot](#)
- [Immunohistochemistry](#)
- [Immunofluorescence](#)
- [Immunoprecipitation](#)
- [Flow Cytometry](#)
- [Cell Culture](#)

PCB Antibody - Images



Western blot analysis of PCB expression in HepG2 cell lysate.