

MCM7 Antibody
Rabbit mAb
Catalog # AP92157

Specification

MCM7 Antibody - Product Information

Application	WB, FC, ICC
Primary Accession	P33993
Clonality	Monoclonal
Other Names	
CDC47; MCM2; Mcm7; Minichromosome Maintenance 7; P1CDC47; P85MCM; PNAS146;	
Isotype	Rabbit IgG
Host	Rabbit
Calculated MW	81308 Da

MCM7 Antibody - Additional Information

Dilution	WB~~1:1000 FC~~1:10~50 ICC~~N/A
Purification	Affinity-chromatography
Immunogen	A synthesized peptide derived from human MCM7
Description	Acts as component of the MCM2-7 complex (MCM complex) which is the putative replicative helicase essential for 'once per cell cycle' DNA replication initiation and elongation in eukaryotic cells.
Storage Condition and Buffer	Rabbit IgG in phosphate buffered saline , pH 7.4, 150mM NaCl, 0.02% sodium azide and 50% glycerol. Store at +4°C short term. Store at -20°C long term. Avoid freeze / thaw cycle.

MCM7 Antibody - Protein Information

Name MCM7 ([HGNC:6950](#))

Synonyms CDC47, MCM2

Function

Acts as a component of the MCM2-7 complex (MCM complex) which is the replicative helicase essential for 'once per cell cycle' DNA replication initiation and elongation in eukaryotic cells. Core component of CDC45-MCM-GINS (CMG) helicase, the molecular machine that unwinds template DNA during replication, and around which the replisome is built (PubMed:25661590, PubMed:32453425, PubMed:34694004, PubMed:<a

[34700328](http://www.uniprot.org/citations/34700328), PubMed:<[35585232](http://www.uniprot.org/citations/35585232)>, PubMed:<[9305914](http://www.uniprot.org/citations/9305914)>). The active ATPase sites in the MCM2-7 ring are formed through the interaction surfaces of two neighboring subunits such that a critical structure of a conserved arginine finger motif is provided in trans relative to the ATP-binding site of the Walker A box of the adjacent subunit. The six ATPase active sites, however, are likely to contribute differentially to the complex helicase activity (PubMed:<[32453425](http://www.uniprot.org/citations/32453425)>). Required for S-phase checkpoint activation upon UV-induced damage.

Cellular Location

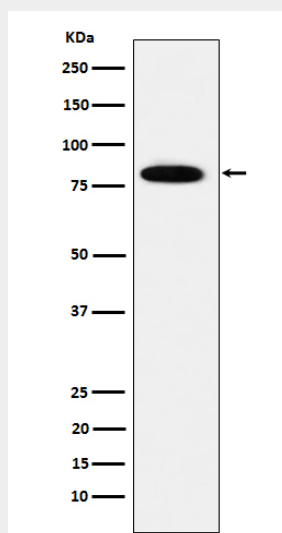
Nucleus. Chromosome. Note=Associated with chromatin before the formation of nuclei and detaches from it as DNA replication progresses.

MCM7 Antibody - Protocols

Provided below are standard protocols that you may find useful for product applications.

- [Western Blot](#)
- [Blocking Peptides](#)
- [Dot Blot](#)
- [Immunohistochemistry](#)
- [Immunofluorescence](#)
- [Immunoprecipitation](#)
- [Flow Cytometry](#)
- [Cell Culture](#)

MCM7 Antibody - Images



Western blot analysis of MCM7 expression in HeLa cell lysate.