

GNB2 Antibody
Rabbit mAb
Catalog # AP92162**Specification**

GNB2 Antibody - Product Information

Application	WB, IHC, FC, ICC, IP
Primary Accession	P62879
Reactivity	Rat
Clonality	Monoclonal
Other Names	
Gnb2; Gnb2l1; RACK1; Transducin beta chain 2;	

Isotype	Rabbit IgG
Host	Rabbit
Calculated MW	37331 Da

GNB2 Antibody - Additional Information

Dilution	WB~~1:1000 IHC~~1:100~500 FC~~1:10~50 ICC~~N/A IP~~N/A
Purification	Affinity-chromatography
Immunogen	A synthesized peptide derived from human GNB2
Description	Guanine nucleotide-binding proteins (G proteins) are involved as a modulator or transducer in various transmembrane signaling systems. The beta and gamma chains are required for the GTPase activity, for replacement of GDP by GTP, and for G protein-effector interaction.
Storage Condition and Buffer	Rabbit IgG in phosphate buffered saline , pH 7.4, 150mM NaCl, 0.02% sodium azide and 50% glycerol. Store at +4°C short term. Store at -20°C long term. Avoid freeze / thaw cycle.

GNB2 Antibody - Protein Information**Name** GNB2**Function**

Guanine nucleotide-binding proteins (G proteins) are involved as a modulator or transducer in various transmembrane signaling systems. The beta and gamma chains are required for the GTPase activity, for replacement of GDP by GTP, and for G protein-effector interaction.

Cellular Location

Cytoplasm, perinuclear region. Cell membrane

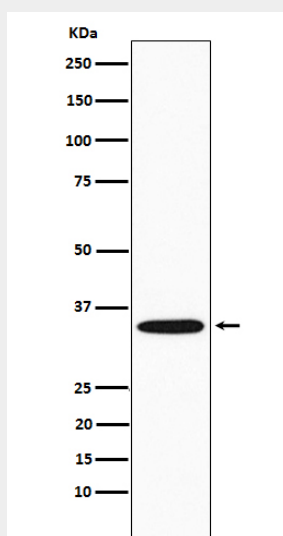
Tissue Location

Expressed in all cardiac subcompartments and in the brain, with highest levels in the atrioventricular node and brain

GNB2 Antibody - Protocols

Provided below are standard protocols that you may find useful for product applications.

- [Western Blot](#)
- [Blocking Peptides](#)
- [Dot Blot](#)
- [Immunohistochemistry](#)
- [Immunofluorescence](#)
- [Immunoprecipitation](#)
- [Flow Cytometry](#)
- [Cell Culture](#)

GNB2 Antibody - Images

Western blot analysis of GNB2 expression in Jurkat cell lysate.