

TC10 Antibody
Rabbit mAb
Catalog # AP92164**Specification**

TC10 Antibody - Product Information

Application	WB, ICC
Primary Accession	P17081
Reactivity	Rat
Clonality	Monoclonal
Other Names	
ARHQ; RASL7A; Rho related GTP binding protein RhoQ; Rhoq; TC10A;	
Isotype	Rabbit IgG
Host	Rabbit
Calculated MW	22659 Da

TC10 Antibody - Additional Information

Dilution	WB~~1:1000 ICC~~N/A
Purification	Affinity-chromatography
Immunogen	A synthesized peptide derived from human TC10
Description	Plasma membrane-associated small GTPase which cycles between an active GTP-bound and an inactive GDP-bound state. In active state binds to a variety of effector proteins to regulate cellular responses. Involved in epithelial cell polarization processes.
Storage Condition and Buffer	Rabbit IgG in phosphate buffered saline , pH 7.4, 150mM NaCl, 0.02% sodium azide and 50% glycerol. Store at +4°C short term. Store at -20°C long term. Avoid freeze / thaw cycle.

TC10 Antibody - Protein Information**Name** RHOQ**Synonyms** ARHQ, RASL7A, TC10**Function**

Plasma membrane-associated small GTPase which cycles between an active GTP-bound and an inactive GDP-bound state. In active state binds to a variety of effector proteins to regulate cellular responses. Involved in epithelial cell polarization processes. May play a role in CFTR trafficking to the plasma membrane. Causes the formation of thin, actin-rich surface projections called filopodia.

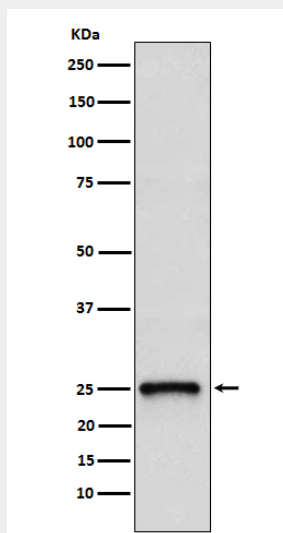
Cellular Location

Cytoplasm. Cell membrane; Lipid-anchor

TC10 Antibody - Protocols

Provided below are standard protocols that you may find useful for product applications.

- [Western Blot](#)
- [Blocking Peptides](#)
- [Dot Blot](#)
- [Immunohistochemistry](#)
- [Immunofluorescence](#)
- [Immunoprecipitation](#)
- [Flow Cytometry](#)
- [Cell Culture](#)

TC10 Antibody - Images

Western blot analysis of TC10 expression in 293T cell lysate.