

COPS3 Antibody
Rabbit mAb
Catalog # AP92169**Specification**

COPS3 Antibody - Product Information

Application	WB, FC, ICC, IP
Primary Accession	O9UNS2
Reactivity	Rat
Clonality	Monoclonal
Other Names	
COP9 subunit 3; cops3; CSN3; JAB 1 containing signalosome subunit 3; SGN3; Signalosome subunit 3;	
Isotype	Rabbit IgG
Host	Rabbit
Calculated MW	47873 Da

COPS3 Antibody - Additional Information

Dilution	WB~~1:1000 FC~~1:10~50 ICC~~N/A IP~~N/A
Purification	Affinity-chromatography
Immunogen	A synthesized peptide derived from human COPS3
Description	Component of the COP9 signalosome complex (CSN), a complex involved in various cellular and developmental processes. The CSN complex is an essential regulator of the ubiquitin (Ubl) conjugation pathway by mediating the deneddylation of the cullin subunits of SCF-type E3 ligase complexes, leading to decrease the Ubl ligase activity of SCF-type complexes such as SCF, CSA or DDB2.
Storage Condition and Buffer	Rabbit IgG in phosphate buffered saline , pH 7.4, 150mM NaCl, 0.02% sodium azide and 50% glycerol. Store at +4°C short term. Store at -20°C long term. Avoid freeze / thaw cycle.

COPS3 Antibody - Protein Information**Name** COPS3**Synonyms** CSN3

Function

Component of the COP9 signalosome complex (CSN), a complex involved in various cellular and developmental processes. The CSN complex is an essential regulator of the ubiquitin (Ubl) conjugation pathway by mediating the deneddylation of the cullin subunits of SCF- type E3 ligase complexes, leading to decrease the Ubl ligase activity of SCF-type complexes such as SCF, CSA or DDB2. The complex is also involved in phosphorylation of p53/TP53, c-jun/JUN, IkappaBalpha/NFKBIA, ITPK1 and IRF8/ICSBP, possibly via its association with CK2 and PKD kinases. CSN-dependent phosphorylation of TP53 and JUN promotes and protects degradation by the Ubl system, respectively.

Cellular Location

Cytoplasm. Nucleus

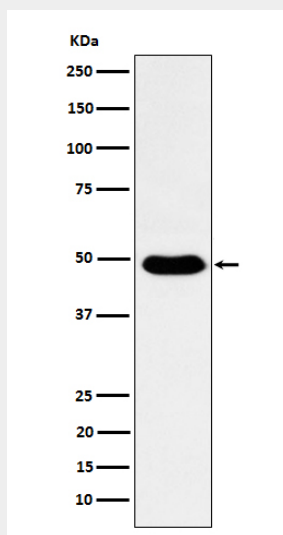
Tissue Location

Widely expressed. Expressed at high level in heart and skeletal muscle.

COPS3 Antibody - Protocols

Provided below are standard protocols that you may find useful for product applications.

- [Western Blot](#)
- [Blocking Peptides](#)
- [Dot Blot](#)
- [Immunohistochemistry](#)
- [Immunofluorescence](#)
- [Immunoprecipitation](#)
- [Flow Cytometry](#)
- [Cell Culture](#)

COPS3 Antibody - Images

Western blot analysis of COPS3 expression in HeLa cell lysate.