

Calpain small subunit 1 Antibody
Rabbit mAb
Catalog # AP92175**Specification**

Calpain small subunit 1 Antibody - Product Information

Application	WB, IHC, FC, ICC
Primary Accession	P04632
Reactivity	Rat
Clonality	Monoclonal
Other Names	
Calpain4; CalpainS1; CANP; CANPS; CAPN4; CAPNS; Capns1; CDPS; CSS1;	
Isotype	Rabbit IgG
Host	Rabbit
Calculated MW	28316 Da

Calpain small subunit 1 Antibody - Additional Information

Dilution	WB~~1:1000 IHC~~1:100~500 FC~~1:10~50 ICC~~N/A
Purification	Affinity-chromatography
Immunogen	A synthesized peptide derived from human Calpain small subunit 1
Description	Regulatory subunit of the calcium-regulated non-lysosomal thiol-protease which catalyzes limited proteolysis of substrates involved in cytoskeletal remodeling and signal transduction.
Storage Condition and Buffer	Rabbit IgG in phosphate buffered saline , pH 7.4, 150mM NaCl, 0.02% sodium azide and 50% glycerol. Store at +4°C short term. Store at -20°C long term. Avoid freeze / thaw cycle.

Calpain small subunit 1 Antibody - Protein Information**Name** CAPNS1**Synonyms** CAPN4, CAPNS**Function**

Regulatory subunit of the calcium-regulated non-lysosomal thiol-protease which catalyzes limited proteolysis of substrates involved in cytoskeletal remodeling and signal transduction. Essential for embryonic development (By similarity).

Cellular Location

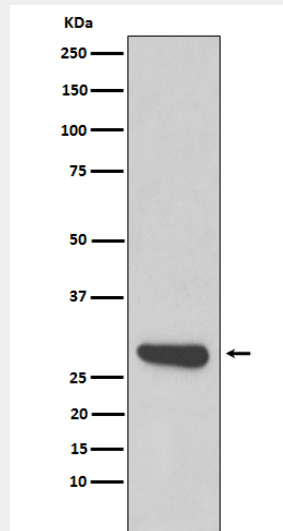
Cytoplasm. Cell membrane. Note=Translocates to the plasma membrane upon calcium binding.

Calpain small subunit 1 Antibody - Protocols

Provided below are standard protocols that you may find useful for product applications.

- [Western Blot](#)
- [Blocking Peptides](#)
- [Dot Blot](#)
- [Immunohistochemistry](#)
- [Immunofluorescence](#)
- [Immunoprecipitation](#)
- [Flow Cytometry](#)
- [Cell Culture](#)

Calpain small subunit 1 Antibody - Images



Western blot analysis of Calpain small subunit 1 expression in 293T cell lysate.