

**ENTPD5 Antibody**  
**Rabbit mAb**  
**Catalog # AP92179****Specification****ENTPD5 Antibody - Product Information**

Application	WB
Primary Accession	<a href="#">O75356</a>
Reactivity	Rat
Clonality	Monoclonal
<b>Other Names</b>	
CD39L4; Entpd5; mNTPase; NTPDase 5; PCPH;	
Isotype	Rabbit IgG
Host	Rabbit
Calculated MW	47517 Da

**ENTPD5 Antibody - Additional Information**

Dilution	WB~~1:1000
Purification	Affinity-chromatography
Immunogen	A synthesized peptide derived from human ENTPD5
Description	Uridine diphosphatase (UDPase) that promotes protein N-glycosylation and ATP level regulation. UDP hydrolysis promotes protein N-glycosylation and folding in the endoplasmic reticulum, as well as elevated ATP consumption in the cytosol via an ATP hydrolysis cycle.
Storage Condition and Buffer	Rabbit IgG in phosphate buffered saline , pH 7.4, 150mM NaCl, 0.02% sodium azide and 50% glycerol. Store at +4°C short term. Store at -20°C long term. Avoid freeze / thaw cycle.

**ENTPD5 Antibody - Protein Information****Name** ENTPD5 ([HGNC:3367](#))**Function**

Hydrolyzes nucleoside diphosphates with a preference for GDP, IDP and UDP compared to ADP and CDP (PubMed: [10400613](http://www.uniprot.org/citations/10400613), PubMed: [15698960](http://www.uniprot.org/citations/15698960)). In the lumen of the endoplasmic reticulum, hydrolyzes UDP that acts as an end-product feedback inhibitor of the UDP-Glc:glycoprotein glucosyltransferases. UMP can be transported back by an UDP-sugar antiporter to the cytosol where it is consumed to regenerate UDP- glucose. Therefore, it positively regulates protein reglucosylation by clearing UDP from the ER lumen and by promoting the regeneration of UDP-glucose. Protein reglucosylation is

essential to proper glycoprotein folding and quality control in the ER (By similarity).

**Cellular Location**

Endoplasmic reticulum {ECO:0000250|UniProtKB:Q9WUZ9}. Secreted

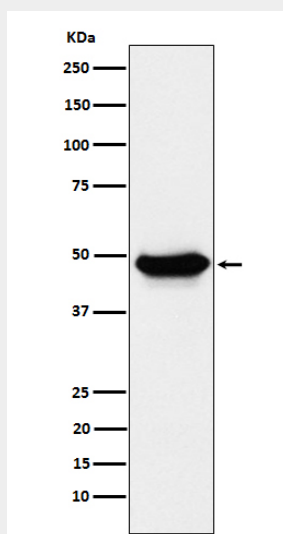
**Tissue Location**

Expressed in adult liver, kidney, prostate, testis and colon. Much weaker expression in other tissues

**ENTPD5 Antibody - Protocols**

Provided below are standard protocols that you may find useful for product applications.

- [Western Blot](#)
- [Blocking Peptides](#)
- [Dot Blot](#)
- [Immunohistochemistry](#)
- [Immunofluorescence](#)
- [Immunoprecipitation](#)
- [Flow Cytometry](#)
- [Cell Culture](#)

**ENTPD5 Antibody - Images**

Western blot analysis of ENTPD5 expression in LnCaP cell lysate.