

**GCDFP 15 Antibody**  
**Rabbit mAb**  
**Catalog # AP92189****Specification**

---

**GCDFP 15 Antibody - Product Information**

Application	WB, ICC, IP
Primary Accession	<a href="#">P12273</a>
Clonality	Monoclonal
<b>Other Names</b>	
BRST2; GCDGP15; gp17; GPIP4; PIP; Prolactin induced protein; SABP; Secretory actin binding protein;	
Isotype	Rabbit IgG
Host	Rabbit
Calculated MW	16572 Da

**GCDFP 15 Antibody - Additional Information**

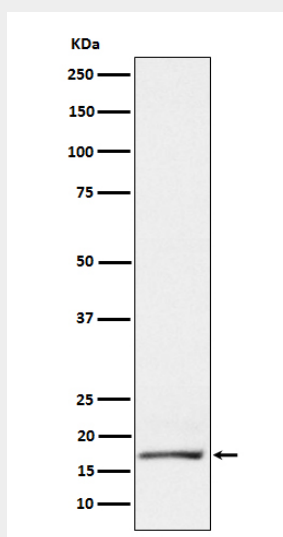
Dilution	WB~~1:1000 ICC~~N/A IP~~N/A
Purification	Affinity-chromatography
Immunogen	A synthesized peptide derived from human GCDFP 15
Description	Belongs to the PIP family.
Storage Condition and Buffer	Rabbit IgG in phosphate buffered saline , pH 7.4, 150mM NaCl, 0.02% sodium azide and 50% glycerol. Store at +4°C short term. Store at -20°C long term. Avoid freeze / thaw cycle.

**GCDFP 15 Antibody - Protein Information****Name** PIP**Synonyms** GCDFP15, GPIP4**Cellular Location**  
Secreted.**Tissue Location**  
Expressed in pathological conditions of the mammary gland and in several exocrine tissues, such as the lacrimal, salivary, and sweat glands**GCDFP 15 Antibody - Protocols**

Provided below are standard protocols that you may find useful for product applications.

- [Western Blot](#)
- [Blocking Peptides](#)
- [Dot Blot](#)
- [Immunohistochemistry](#)
- [Immunofluorescence](#)
- [Immunoprecipitation](#)
- [Flow Cytometry](#)
- [Cell Culture](#)

#### **GCDFP 15 Antibody - Images**



Western blot analysis of GCDFP 15 expression in T47D cell lysate.