

Cripto1 Antibody
Rabbit mAb
Catalog # AP92190**Specification**

Cripto1 Antibody - Product Information

Application	WB, FC, ICC, IP
Primary Accession	P13385
Clonality	Monoclonal
Other Names	
CRGF; Cripto 1; cripto; Cripto1 growth factor; TDGF1;	

Isotype	Rabbit IgG
Host	Rabbit
Calculated MW	21169 Da

Cripto1 Antibody - Additional Information

Dilution	WB~~1:1000 FC~~1:10~50 ICC~~N/A IP~~N/A
Purification	Affinity-chromatography
Immunogen	A synthesized peptide derived from human Cripto1
Description	Could play a role in the determination of the epiblastic cells that subsequently give rise to the mesoderm.
Storage Condition and Buffer	Rabbit IgG in phosphate buffered saline , pH 7.4, 150mM NaCl, 0.02% sodium azide and 50% glycerol. Store at +4°C short term. Store at -20°C long term. Avoid freeze / thaw cycle.

Cripto1 Antibody - Protein Information

Name CRIPTO {ECO:0000303|PubMed:2792079, ECO:0000312|HGNC:HGNC:11701}

Function

GPI-anchored cell membrane protein involved in Nodal signaling. Cell-associated CRIPTO acts as a Nodal coreceptor in cis. Shedding of CRIPTO by TMEM8A modulates Nodal signaling by allowing soluble CRIPTO to act as a Nodal coreceptor on other cells (PubMed:27881714). Could play a role in the determination of the epiblastic cells that subsequently give rise to the mesoderm (PubMed:11909953).

Cellular Location

Cell membrane; Lipid-anchor, GPI-anchor. Secreted. Note=Released from the cell membrane by GPI cleavage.

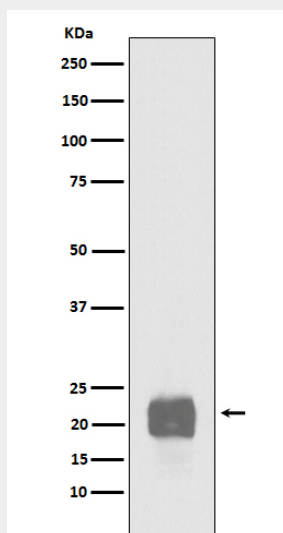
Tissue Location

Preferentially expressed in gastric and colorectal carcinomas than in their normal counterparts.
Expressed in breast and lung.

Cripto1 Antibody - Protocols

Provided below are standard protocols that you may find useful for product applications.

- [Western Blot](#)
- [Blocking Peptides](#)
- [Dot Blot](#)
- [Immunohistochemistry](#)
- [Immunofluorescence](#)
- [Immunoprecipitation](#)
- [Flow Cytometry](#)
- [Cell Culture](#)

Cripto1 Antibody - Images

Western blot analysis of Cripto1 expression in NCCIT cell lysate.