

FBP1 Antibody
Rabbit mAb
Catalog # AP92191**Specification**

FBP1 Antibody - Product Information

Application	WB, FC, ICC, IP
Primary Accession	P09467
Reactivity	Rat
Clonality	Monoclonal
Other Names	
FBP; FBP1; FBPase 1;	
Isotype	Rabbit IgG
Host	Rabbit
Calculated MW	36842 Da

FBP1 Antibody - Additional Information

Dilution	WB~~1:1000 FC~~1:10~50 ICC~~N/A IP~~N/A
Purification	Affinity-chromatography
Immunogen	A synthesized peptide derived from human FBP1
Description	Catalyzes the hydrolysis of fructose 1,6-bisphosphate to fructose 6-phosphate in the presence of divalent cations, acting as a rate-limiting enzyme in gluconeogenesis.
Storage Condition and Buffer	Rabbit IgG in phosphate buffered saline , pH 7.4, 150mM NaCl, 0.02% sodium azide and 50% glycerol. Store at +4°C short term. Store at -20°C long term. Avoid freeze / thaw cycle.

FBP1 Antibody - Protein Information**Name** FBP1**Synonyms** FBP**Function**

Catalyzes the hydrolysis of fructose 1,6-bisphosphate to fructose 6-phosphate in the presence of divalent cations, acting as a rate-limiting enzyme in gluconeogenesis. Plays a role in regulating glucose sensing and insulin secretion of pancreatic beta-cells. Appears to modulate glycerol gluconeogenesis in liver. Important regulator of appetite and adiposity; increased expression of the protein in liver after nutrient excess increases circulating satiety hormones and reduces

appetite-stimulating neuropeptides and thus seems to provide a feedback mechanism to limit weight gain.

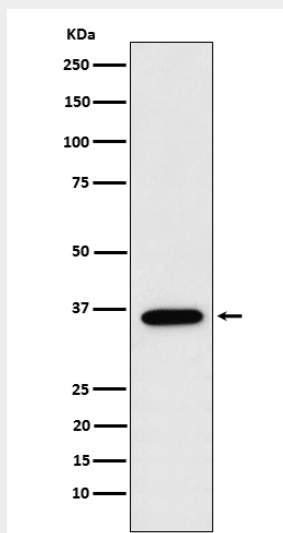
Tissue Location

Expressed in pancreatic islets.

FBP1 Antibody - Protocols

Provided below are standard protocols that you may find useful for product applications.

- [Western Blot](#)
- [Blocking Peptides](#)
- [Dot Blot](#)
- [Immunohistochemistry](#)
- [Immunofluorescence](#)
- [Immunoprecipitation](#)
- [Flow Cytometry](#)
- [Cell Culture](#)

FBP1 Antibody - Images

Western blot analysis of FBP1 expression in MCF7 cell lysate.