

**CLSTN1 Antibody**  
**Rabbit mAb**  
**Catalog # AP92193****Specification**

---

**CLSTN1 Antibody - Product Information**

Application	WB, IHC, ICC
Primary Accession	<a href="#">O94985</a>
Clonality	Monoclonal
<b>Other Names</b>	
Alcadein alpha 1; alcalpha1; alcalpha2; Calsyntenin 1; CDHR12; Clstn1; CS1; CSTN1; PIK3CD; XB31alpha;	
Isotype	Rabbit IgG
Host	Rabbit
Calculated MW	109793 Da

**CLSTN1 Antibody - Additional Information**

Dilution	WB~~1:1000 IHC~~1:100~500 ICC~~N/A
Purification	Affinity-chromatography
Immunogen	A synthesized peptide derived from human CLSTN1
Description	Induces KLC1 association with vesicles and functions as a cargo in axonal anterograde transport. Complex formation with APBA2 and APP, stabilizes APP metabolism and enhances APBA2-mediated suppression of beta-APP40 secretion, due to the retardation of intracellular APP maturation.
Storage Condition and Buffer	Rabbit IgG in phosphate buffered saline , pH 7.4, 150mM NaCl, 0.02% sodium azide and 50% glycerol. Store at +4°C short term. Store at -20°C long term. Avoid freeze / thaw cycle.

**CLSTN1 Antibody - Protein Information****Name** CLSTN1 ([HGNC:17447](#))**Function**

Postsynaptic adhesion molecule that binds to presynaptic neuroligins to mediate both excitatory and inhibitory synapse formation (By similarity). Promotes synapse development by acting as a cell adhesion molecule at the postsynaptic membrane, which associates with neuroligin-1 at the presynaptic membrane (By similarity). Also functions as a cargo in axonal anterograde transport by acting as a molecular adapter that promotes KLC1 association with vesicles

(PubMed:<a href="http://www.uniprot.org/citations/21385839" target="\_blank">21385839</a>). Complex formation with APBA2 and APP, stabilizes APP metabolism and enhances APBA2-mediated suppression of beta-APP40 secretion, due to the retardation of intracellular APP maturation (PubMed:<a href="http://www.uniprot.org/citations/12972431" target="\_blank">12972431</a>).

#### Cellular Location

Postsynaptic cell membrane {ECO:0000250|UniProtKB:Q9EPL2}; Single-pass type I membrane protein. Endoplasmic reticulum membrane; Single-pass type I membrane protein. Golgi apparatus membrane; Single-pass type I membrane protein. Cell projection, neuron projection. Note=Localized in the postsynaptic membrane of both excitatory and inhibitory synapses {ECO:0000250|UniProtKB:Q9EPL2}

#### Tissue Location

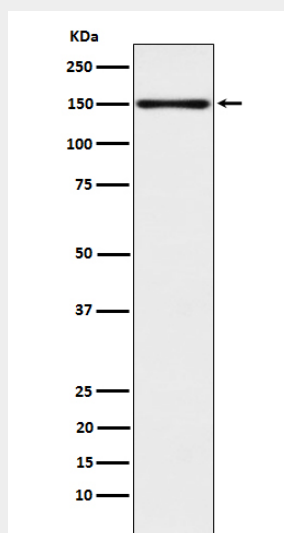
Expressed in the brain and, a lower level, in the heart, skeletal muscle, kidney and placenta. Accumulates in dystrophic neurites around the amyloid core of Alzheimer disease senile plaques (at protein level).

### CLSTN1 Antibody - Protocols

Provided below are standard protocols that you may find useful for product applications.

- [Western Blot](#)
- [Blocking Peptides](#)
- [Dot Blot](#)
- [Immunohistochemistry](#)
- [Immunofluorescence](#)
- [Immunoprecipitation](#)
- [Flow Cytometry](#)
- [Cell Culture](#)

### CLSTN1 Antibody - Images



Western blot analysis of CLSTN1 expression in 293T cell lysate.