

ENTPD5 Antibody
Rabbit mAb
Catalog # AP92195**Specification**

ENTPD5 Antibody - Product Information

Application	WB, IHC, IP
Primary Accession	075356
Reactivity	Rat
Clonality	Monoclonal
Other Names	
CD39L4; Entpd5; mNTPase; NTPDase 5; PCPH; UDPase ENTPD5;	
Isotype	Rabbit IgG
Host	Rabbit
Calculated MW	47517 Da

ENTPD5 Antibody - Additional Information

Dilution	WB~~1:1000 IHC~~1:100~500 IP~~N/A
Purification	Affinity-chromatography
Immunogen	A synthesized peptide derived from human ENTPD5
Description	Uridine diphosphatase (UDPase) that promotes protein N-glycosylation and ATP level regulation. UDP hydrolysis promotes protein N-glycosylation and folding in the endoplasmic reticulum, as well as elevated ATP consumption in the cytosol via an ATP hydrolysis cycle.
Storage Condition and Buffer	Rabbit IgG in phosphate buffered saline , pH 7.4, 150mM NaCl, 0.02% sodium azide and 50% glycerol. Store at +4°C short term. Store at -20°C long term. Avoid freeze / thaw cycle.

ENTPD5 Antibody - Protein Information**Name** ENTPD5 ([HGNC:3367](#))**Function**

Hydrolyzes nucleoside diphosphates with a preference for GDP, IDP and UDP compared to ADP and CDP (PubMed: [10400613](http://www.uniprot.org/citations/10400613), PubMed: [15698960](http://www.uniprot.org/citations/15698960)). In the lumen of the endoplasmic reticulum, hydrolyzes UDP that acts as an end-product feedback inhibitor of the UDP-Glc:glycoprotein glucosyltransferases. UMP can be transported back by an UDP-sugar antiporter to the cytosol where it is consumed to

regenerate UDP- glucose. Therefore, it positively regulates protein reglucosylation by clearing UDP from the ER lumen and by promoting the regeneration of UDP-glucose. Protein reglucosylation is essential to proper glycoprotein folding and quality control in the ER (By similarity).

Cellular Location

Endoplasmic reticulum {ECO:0000250|UniProtKB:Q9WUZ9}. Secreted

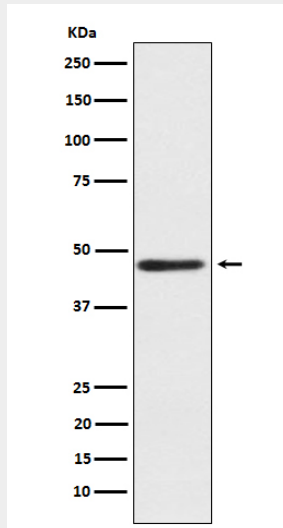
Tissue Location

Expressed in adult liver, kidney, prostate, testis and colon. Much weaker expression in other tissues

ENTPD5 Antibody - Protocols

Provided below are standard protocols that you may find useful for product applications.

- [Western Blot](#)
- [Blocking Peptides](#)
- [Dot Blot](#)
- [Immunohistochemistry](#)
- [Immunofluorescence](#)
- [Immunoprecipitation](#)
- [Flow Cytometry](#)
- [Cell Culture](#)

ENTPD5 Antibody - Images

Western blot analysis of ENTPD5 expression in fetal liver lysate.