

**MALD2 Antibody (C-term)**  
**Affinity Purified Rabbit Polyclonal Antibody (Pab)**  
**Catalog # AP9219b**

**Specification**

---

**MALD2 Antibody (C-term) - Product Information**

Application	WB, IHC-P,E
Primary Accession	<a href="#">Q8N4S9</a>
Reactivity	Human
Host	Rabbit
Clonality	Polyclonal
Isotype	Rabbit IgG
Calculated MW	64168
Antigen Region	386-415

**MALD2 Antibody (C-term) - Additional Information**

**Gene ID** 153562

**Other Names**

MARVEL domain-containing protein 2, Tricellulin, MARVELD2, TRIC

**Target/Specificity**

This MALD2 antibody is generated from rabbits immunized with a KLH conjugated synthetic peptide between 386-415 amino acids from the C-terminal region of human MALD2.

**Dilution**

WB~~1:1000  
IHC-P~~1:50~100

**Format**

Purified polyclonal antibody supplied in PBS with 0.09% (W/V) sodium azide. This antibody is purified through a protein A column, followed by peptide affinity purification.

**Storage**

Maintain refrigerated at 2-8°C for up to 2 weeks. For long term storage store at -20°C in small aliquots to prevent freeze-thaw cycles.

**Precautions**

MALD2 Antibody (C-term) is for research use only and not for use in diagnostic or therapeutic procedures.

**MALD2 Antibody (C-term) - Protein Information**

**Name** MARVELD2 ([HGNC:26401](#))

**Synonyms** TRIC

**Function** Plays a role in the formation of tricellular tight junctions and of epithelial barriers (By similarity). Required for normal hearing via its role in the separation of the endolymphatic and perilymphatic spaces of the organ of Corti in the inner ear, and for normal survival of hair cells in the organ of Corti (PubMed:[17186462](#)).

**Cellular Location**

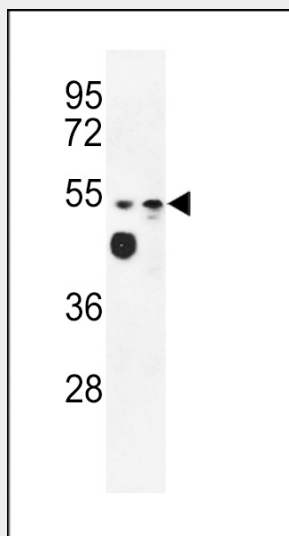
Cell membrane; Multi-pass membrane protein. Cell junction, tight junction. Note=Located at tricellular contacts.

**MALD2 Antibody (C-term) - Protocols**

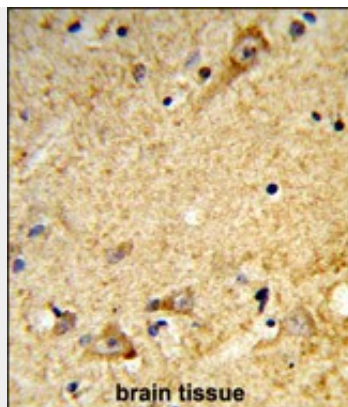
Provided below are standard protocols that you may find useful for product applications.

- [Western Blot](#)
- [Blocking Peptides](#)
- [Dot Blot](#)
- [Immunohistochemistry](#)
- [Immunofluorescence](#)
- [Immunoprecipitation](#)
- [Flow Cytometry](#)
- [Cell Culture](#)

**MALD2 Antibody (C-term) - Images**



Western blot analysis of MALD2 Antibody (C-term) (Cat. #AP9219b) in WiDr, MDA-MB231 cell line lysates (35ug/lane). MALD2 (arrow) was detected using the purified Pab.



Formalin-fixed and paraffin-embedded human brain tissue reacted with MALD2 Antibody (C-term), which was peroxidase-conjugated to the secondary antibody, followed by DAB staining. This data demonstrates the use of this antibody for immunohistochemistry; clinical relevance has not been evaluated.

#### **MALD2 Antibody (C-term) - Background**

MALD2 plays a role in the formation of the epithelial barriers. The separation of the endolymphatic and perilymphatic spaces of the organ of Corti from one another by epithelial barriers is required for normal hearing.

#### **MALD2 Antibody (C-term) - References**

Tam,S., et.al., Nat. Struct. Mol. Biol. 16 (12), 1279-1285 (2009)  
Krug,S.M., et.al., Mol. Biol. Cell 20 (16), 3713-3724 (2009)