

**EWSR1 Antibody**  
**Rabbit mAb**  
**Catalog # AP92203****Specification**

---

**EWSR1 Antibody - Product Information**

Application	WB, IHC, ICC
Primary Accession	<a href="#">Q01844</a>
Reactivity	Rat
Clonality	Monoclonal
<b>Other Names</b>	
EWS; Ewsr1; RNA binding protein EWS;	

Isotype	Rabbit IgG
Host	Rabbit
Calculated MW	68478 Da

**EWSR1 Antibody - Additional Information**

Dilution	WB~~1:1000 IHC~~1:100~500 ICC~~N/A
Purification	Affinity-chromatography
Immunogen	A synthesized peptide derived from human EWSR1
Description	Might normally function as a repressor. EWS-fusion-proteins (EFPS) may play a role in the tumorigenic process. They may disturb gene expression by mimicking, or interfering with the normal function of CTD-POLII within the transcription initiation complex.
Storage Condition and Buffer	Rabbit IgG in phosphate buffered saline , pH 7.4, 150mM NaCl, 0.02% sodium azide and 50% glycerol. Store at +4°C short term. Store at -20°C long term. Avoid freeze / thaw cycle.

**EWSR1 Antibody - Protein Information****Name** EWSR1**Synonyms** EWS**Function**

Binds to ssRNA containing the consensus sequence 5'-AGGUAA-3' (PubMed:<a href="http://www.uniprot.org/citations/21256132" target="\_blank">21256132</a>). Might normally function as a transcriptional repressor (PubMed:<a href="http://www.uniprot.org/citations/10767297" target="\_blank">10767297</a>).

EWS-fusion-proteins (EFPS) may play a role in the tumorigenic process. They may disturb gene expression by mimicking, or interfering with the normal function of CTD-POLII within the transcription initiation complex. They may also contribute to an aberrant activation of the fusion protein target genes.

**Cellular Location**

Nucleus. Cytoplasm. Cell membrane. Note=Relocates from cytoplasm to ribosomes upon PTK2B/FAK2 activation

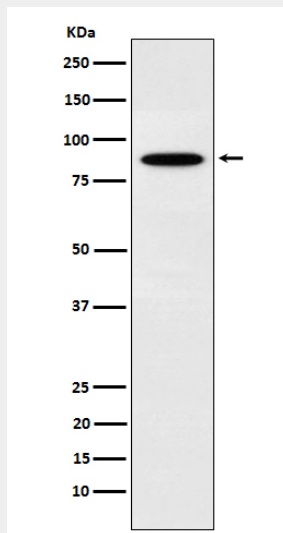
**Tissue Location**

Ubiquitous.

**EWSR1 Antibody - Protocols**

Provided below are standard protocols that you may find useful for product applications.

- [Western Blot](#)
- [Blocking Peptides](#)
- [Dot Blot](#)
- [Immunohistochemistry](#)
- [Immunofluorescence](#)
- [Immunoprecipitation](#)
- [Flow Cytometry](#)
- [Cell Culture](#)

**EWSR1 Antibody - Images**

Western blot analysis of EWSR1 expression in K562 cell lysate.