

**NRG3 Antibody**  
**Rabbit mAb**  
**Catalog # AP92207****Specification**

---

**NRG3 Antibody - Product Information**

Application	WB, FC
Primary Accession	<a href="#">P56975</a>
Reactivity	Rat
Clonality	Monoclonal
<b>Other Names</b>	
HRG3; Neuregulin 3; Nrg3; Pro neuregulin 3;	
Isotype	Rabbit IgG
Host	Rabbit
Calculated MW	77901 Da

**NRG3 Antibody - Additional Information**

Dilution	WB~~1:1000 FC~~1:10~50
Purification	Affinity-chromatography
Immunogen	A synthesized peptide derived from human NRG3
Description	Direct ligand for the ERBB4 tyrosine kinase receptor. Binding results in ligand-stimulated tyrosine phosphorylation and activation of the receptor. Does not bind to the EGF receptor, ERBB2 or ERBB3 receptors. May be a survival factor for oligodendrocytes.
Storage Condition and Buffer	Rabbit IgG in phosphate buffered saline , pH 7.4, 150mM NaCl, 0.02% sodium azide and 50% glycerol. Store at +4°C short term. Store at -20°C long term. Avoid freeze / thaw cycle.

**NRG3 Antibody - Protein Information****Name** NRG3**Function**

Direct ligand for the ERBB4 tyrosine kinase receptor. Binding results in ligand-stimulated tyrosine phosphorylation and activation of the receptor. Does not bind to the EGF receptor, ERBB2 or ERBB3 receptors. May be a survival factor for oligodendrocytes.

**Cellular Location**

[Pro-neuregulin-3, membrane-bound isoform]: Cell membrane; Single-pass type I membrane protein. Note=Does not seem to be active. [Isoform 3]: Cell membrane; Single-pass type I

membrane protein. Note=Isoform 3 is also proteolytically released as a soluble form

#### Tissue Location

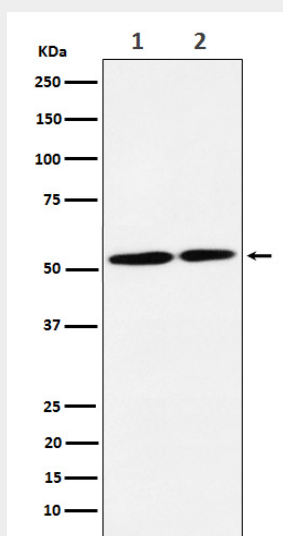
Highly expressed in most regions of the brain with the exception of corpus callosum. Expressed at lower level in testis Not detected in heart, placenta, lung, liver, skeletal muscle, kidney, pancreas, spleen, thymus, prostate, ovary, small intestine, colon and peripheral blood leukocytes

#### NRG3 Antibody - Protocols

Provided below are standard protocols that you may find useful for product applications.

- [Western Blot](#)
- [Blocking Peptides](#)
- [Dot Blot](#)
- [Immunohistochemistry](#)
- [Immunofluorescence](#)
- [Immunoprecipitation](#)
- [Flow Cytometry](#)
- [Cell Culture](#)

#### NRG3 Antibody - Images



Western blot analysis of NRG3 expression in (1) SH-SY5Y cell lysate; (2) C6 cell lysate.