

ODC1 Antibody
Rabbit mAb
Catalog # AP92216

Specification

ODC1 Antibody - Product Information

Application	WB
Primary Accession	P11926
Reactivity	Rat
Clonality	Monoclonal
Other Names	
Dodc1; ODC; Odc1; ODC2; RNODC;	
Isotype	Rabbit IgG
Host	Rabbit
Calculated MW	51148 Da

ODC1 Antibody - Additional Information

Purification	Affinity-chromatography
Immunogen	A synthesized peptide derived from human Ornithine Decarboxylase
Description	Amine and polyamine biosynthesis; putrescine biosynthesis via L-ornithine pathway; putrescine from L-ornithine: step 1/1.
Storage Condition and Buffer	Rabbit IgG in phosphate buffered saline , pH 7.4, 150mM NaCl, 0.02% sodium azide and 50% glycerol. Store at +4°C short term. Store at -20°C long term. Avoid freeze / thaw cycle.

ODC1 Antibody - Protein Information

Name ODC1

Function

Catalyzes the first and rate-limiting step of polyamine biosynthesis that converts ornithine into putrescine, which is the precursor for the polyamines, spermidine and spermine. Polyamines are essential for cell proliferation and are implicated in cellular processes, ranging from DNA replication to apoptosis.

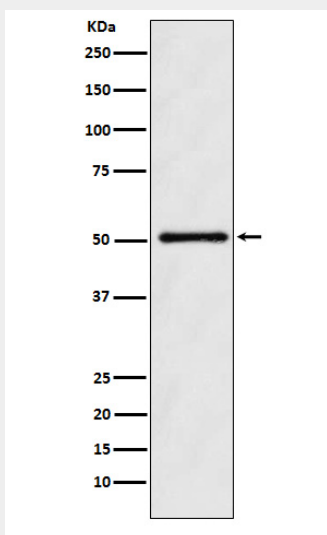
ODC1 Antibody - Protocols

Provided below are standard protocols that you may find useful for product applications.

- [Western Blot](#)

- [Blocking Peptides](#)
- [Dot Blot](#)
- [Immunohistochemistry](#)
- [Immunofluorescence](#)
- [Immunoprecipitation](#)
- [Flow Cytometry](#)
- [Cell Culture](#)

ODC1 Antibody - Images



Western blot analysis of ODC1 expression in K562 cell lysate.