

GORAB Antibody (N-term)
Affinity Purified Rabbit Polyclonal Antibody (Pab)
Catalog # AP9221A

Specification

GORAB Antibody (N-term) - Product Information

Application	WB,E
Primary Accession	Q5T7V8
Other Accession	A5PKK7
Reactivity	Human, Mouse
Predicted	Bovine
Host	Rabbit
Clonality	Polyclonal
Isotype	Rabbit IgG
Calculated MW	42266
Antigen Region	24-52

GORAB Antibody (N-term) - Additional Information

Gene ID 92344

Other Names

RAB6-interacting golgin, N-terminal kinase-like-binding protein 1, NTKL-BP1, NTKL-binding protein 1, hNTKL-BP1, SCY1-like 1-binding protein 1, SCYL1-BP1, SCYL1-binding protein 1, GORAB, NTKLBP1, SCYL1BP1

Target/Specificity

This GORAB antibody is generated from rabbits immunized with a KLH conjugated synthetic peptide between 24-52 amino acids from the N-terminal region of human GORAB.

Dilution

WB~~1:1000

E~~Use at an assay dependent concentration.

Format

Purified polyclonal antibody supplied in PBS with 0.09% (W/V) sodium azide. This antibody is purified through a protein A column, followed by peptide affinity purification.

Storage

Maintain refrigerated at 2-8°C for up to 2 weeks. For long term storage store at -20°C in small aliquots to prevent freeze-thaw cycles.

Precautions

GORAB Antibody (N-term) is for research use only and not for use in diagnostic or therapeutic procedures.

GORAB Antibody (N-term) - Protein Information

Name GORAB

Synonyms NTKLBP1, SCYL1BP1

Cellular Location

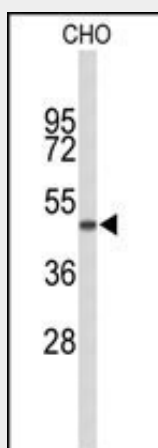
Cytoplasm. Golgi apparatus

GORAB Antibody (N-term) - Protocols

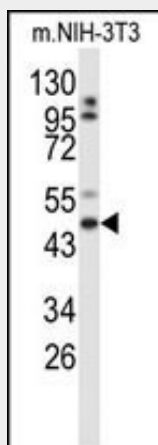
Provided below are standard protocols that you may find useful for product applications.

- [Western Blot](#)
- [Blocking Peptides](#)
- [Dot Blot](#)
- [Immunohistochemistry](#)
- [Immunofluorescence](#)
- [Immunoprecipitation](#)
- [Flow Cytometry](#)
- [Cell Culture](#)

GORAB Antibody (N-term) - Images



Western blot analysis of GORAB Antibody (N-term) (Cat. #AP9221a) in CHO cell line lysates (35ug/lane). GORAB (arrow) was detected using the purified Pab;



Western blot analysis of GORAB Antibody (N-term) (Cat. #AP9221a) in mouse NIH-3T3 cell line lysates (35ug/lane). GORAB (arrow) was detected using the purified Pab.

GORAB Antibody (N-term) - Background

GORAB encodes a member of the golgin family, a group of coiled-coil proteins localized to the Golgi. The encoded protein may function in the secretory pathway. The encoded protein, which also localizes to the cytoplasm, was identified by interactions with the N-terminal kinase-like protein, and thus it may function in mitosis.

GORAB Antibody (N-term) - References

Kim,J., et.al., Life Sci. 86 (9-10), 300-308 (2010)
Al-Dosari,M. et.al., Am. J. Med. Genet. A 149A (10), 2093-2098 (2009)