

TCP1 beta Antibody
Rabbit mAb
Catalog # AP92220

Specification

TCP1 beta Antibody - Product Information

Application	WB, IHC, FC, ICC, IP
Primary Accession	P78371
Reactivity	Rat
Clonality	Monoclonal
Other Names	
CCTB; 99D8.1; PRO1633; CCT-beta; MGC142074; MGC142076; TCP-1-beta;	
Isotype	Rabbit IgG
Host	Rabbit
Calculated MW	57488 Da

TCP1 beta Antibody - Additional Information

Dilution	WB~~1:1000 IHC~~1:100~500 FC~~1:10~50 ICC~~N/A IP~~N/A
Purification	Affinity-chromatography
Immunogen	A synthesized peptide derived from human TCP1 beta
Description	Molecular chaperone; assists the folding of proteins upon ATP hydrolysis. As part of the BBS/CCT complex may play a role in the assembly of BBSome, a complex involved in ciliogenesis regulating transports vesicles to the cilia. Known to play a role, in vitro, in the folding of actin and tubulin.
Storage Condition and Buffer	Rabbit IgG in phosphate buffered saline , pH 7.4, 150mM NaCl, 0.02% sodium azide and 50% glycerol. Store at +4°C short term. Store at -20°C long term. Avoid freeze / thaw cycle.

TCP1 beta Antibody - Protein Information

Name CCT2 {ECO:0000303|PubMed:25467444, ECO:0000312|HGNC:HGNC:1615}

Function

Component of the chaperonin-containing T-complex (TRiC), a molecular chaperone complex that assists the folding of actin, tubulin and other proteins upon ATP hydrolysis (PubMed:25467444, PubMed:<a

<http://www.uniprot.org/citations/36493755> target="_blank">36493755, PubMed:35449234, PubMed:37193829). The TRiC complex mediates the folding of WRAP53/TCAB1, thereby regulating telomere maintenance (PubMed:25467444). As part of the TRiC complex may play a role in the assembly of BBSome, a complex involved in ciliogenesis regulating transports vesicles to the cilia (PubMed:20080638).

Cellular Location

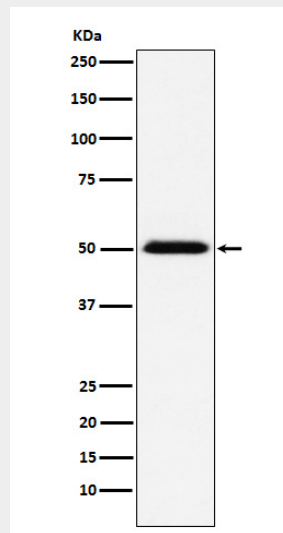
Cytoplasm.

TCP1 beta Antibody - Protocols

Provided below are standard protocols that you may find useful for product applications.

- [Western Blot](#)
- [Blocking Peptides](#)
- [Dot Blot](#)
- [Immunohistochemistry](#)
- [Immunofluorescence](#)
- [Immunoprecipitation](#)
- [Flow Cytometry](#)
- [Cell Culture](#)

TCP1 beta Antibody - Images



Western blot analysis of TCP1 beta expression in MCF-7 cell lysate.