

Epac2 Antibody
Rabbit mAb
Catalog # AP92221**Specification**

Epac2 Antibody - Product Information

Application	WB
Primary Accession	Q8WZA2
Reactivity	Rat
Clonality	Monoclonal
Other Names	
CAMP GEFII; CAMPGEFII; CGEF2; EPAC2; Rapgef4;	
Isotype	Rabbit IgG
Host	Rabbit
Calculated MW	115522 Da

Epac2 Antibody - Additional Information

Dilution	WB~~1:1000
Purification	Affinity-chromatography
Immunogen	A synthesized peptide derived from human Epac2
Description	Guanine nucleotide exchange factor (GEF) for RAP1A, RAP1B and RAP2A small GTPases that is activated by binding cAMP. Seems not to activate RAB3A. Involved in cAMP-dependent, PKA-independent exocytosis through interaction with RIMS2.
Storage Condition and Buffer	Rabbit IgG in phosphate buffered saline , pH 7.4, 150mM NaCl, 0.02% sodium azide and 50% glycerol. Store at +4°C short term. Store at -20°C long term. Avoid freeze / thaw cycle.

Epac2 Antibody - Protein Information**Name** RAPGEF4**Synonyms** CGEF2, EPAC2**Function**

Guanine nucleotide exchange factor (GEF) for RAP1A, RAP1B and RAP2A small GTPases that is activated by binding cAMP. Seems not to activate RAB3A. Involved in cAMP-dependent, PKA-independent exocytosis through interaction with RIMS2 (By similarity).

Cellular Location

Cytoplasm. Membrane; Peripheral membrane protein

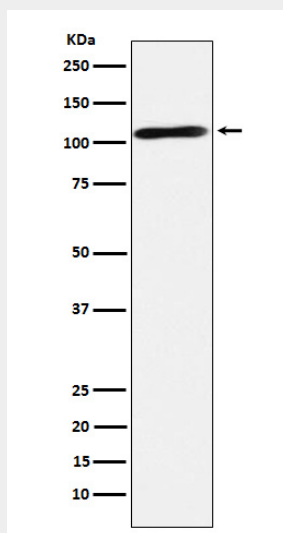
Tissue Location

Predominantly expressed in brain and adrenal gland. Isoform 2 is expressed in liver. Isoform 1 is expressed in liver at very low levels

Epac2 Antibody - Protocols

Provided below are standard protocols that you may find useful for product applications.

- [Western Blot](#)
- [Blocking Peptides](#)
- [Dot Blot](#)
- [Immunohistochemistry](#)
- [Immunofluorescence](#)
- [Immunoprecipitation](#)
- [Flow Cytometry](#)
- [Cell Culture](#)

Epac2 Antibody - Images

Western blot analysis of Epac2 expression in Human fetal brain lysate.