

Apolipoprotein CI Antibody
Rabbit mAb
Catalog # AP92224**Specification****Apolipoprotein CI Antibody - Product Information**

Application	WB, IHC, FC, ICC, IP
Primary Accession	P02654
Clonality	Monoclonal
Other Names	
APO C1; Apo CI; APOC 1; ApoC I; APOC1; APOC1B; ApolipoproteinCI;	
Isotype	Rabbit IgG
Host	Rabbit
Calculated MW	9332 Da

Apolipoprotein CI Antibody - Additional Information

Dilution	WB~~1:1000 IHC~~1:100~500 FC~~1:10~50 ICC~~N/A IP~~N/A
Purification	Affinity-chromatography
Immunogen	A synthesized peptide derived from human Apolipoprotein CI
Description	Appears to modulate the interaction of APOE with beta-migrating VLDL and inhibit binding of beta-VLDL to the LDL receptor-related protein. Binds free fatty acids and reduces their intracellular esterification.
Storage Condition and Buffer	Rabbit IgG in phosphate buffered saline , pH 7.4, 150mM NaCl, 0.02% sodium azide and 50% glycerol. Store at +4°C short term. Store at -20°C long term. Avoid freeze / thaw cycle.

Apolipoprotein CI Antibody - Protein Information**Name** APOC1**Function**

Inhibitor of lipoprotein binding to the low density lipoprotein (LDL) receptor, LDL receptor-related protein, and very low density lipoprotein (VLDL) receptor. Associates with high density lipoproteins (HDL) and the triacylglycerol-rich lipoproteins in the plasma and makes up about 10% of the protein of the VLDL and 2% of that of HDL. Appears to interfere directly with fatty acid uptake and is also the major plasma inhibitor of cholesteryl ester transfer protein (CETP). Binds free fatty acids and reduces their intracellular esterification. Modulates the interaction of APOE with

beta-migrating VLDL and inhibits binding of beta-VLDL to the LDL receptor-related protein.

Cellular Location

Secreted.

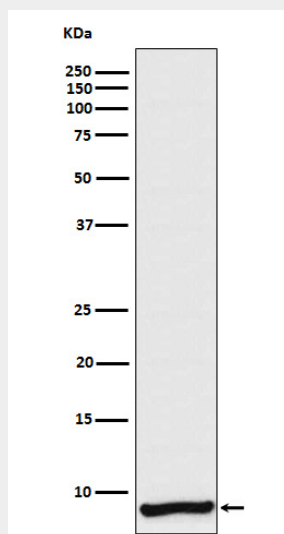
Tissue Location

Synthesized mainly in liver and to a minor degree in intestine. Also found in the lung and spleen

Apolipoprotein CI Antibody - Protocols

Provided below are standard protocols that you may find useful for product applications.

- [Western Blot](#)
- [Blocking Peptides](#)
- [Dot Blot](#)
- [Immunohistochemistry](#)
- [Immunofluorescence](#)
- [Immunoprecipitation](#)
- [Flow Cytometry](#)
- [Cell Culture](#)

Apolipoprotein CI Antibody - Images

Western blot analysis of Apolipoprotein CI expression in Human plasma lysate.