

IKZF3 Antibody
Rabbit mAb
Catalog # AP92226**Specification**

IKZF3 Antibody - Product Information

Application	WB, IHC, FC, ICC
Primary Accession	Q9UKT9
Reactivity	Rat
Clonality	Monoclonal
Other Names	
AIO; Aiolos; IKZF3; ZNFN1A3;	
Isotype	Rabbit IgG
Host	Rabbit
Calculated MW	58023 Da

IKZF3 Antibody - Additional Information

Dilution	WB~~1:1000 IHC~~1:100~500 FC~~1:10~50 ICC~~N/A
Purification	Affinity-chromatography
Immunogen	A synthesized peptide derived from human IKZF3
Description	Transcription factor that plays an important role in the regulation of lymphocyte differentiation. Plays an essential role in regulation of B-cell differentiation, proliferation and maturation to an effector state. Involved in regulating BCL2 expression and controlling apoptosis in T-cells in an IL2-dependent manner.
Storage Condition and Buffer	Rabbit IgG in phosphate buffered saline , pH 7.4, 150mM NaCl, 0.02% sodium azide and 50% glycerol. Store at +4°C short term. Store at -20°C long term. Avoid freeze / thaw cycle.

IKZF3 Antibody - Protein Information**Name** IKZF3**Synonyms** ZNFN1A3**Function**

Transcription factor that plays an important role in the regulation of lymphocyte differentiation.

Plays an essential role in regulation of B-cell differentiation, proliferation and maturation to an effector state. Involved in regulating BCL2 expression and controlling apoptosis in T-cells in an IL2-dependent manner.

Cellular Location

Nucleus. Cytoplasm [Isoform 3]: Nucleus [Isoform 14]: Nucleus. Cytoplasm

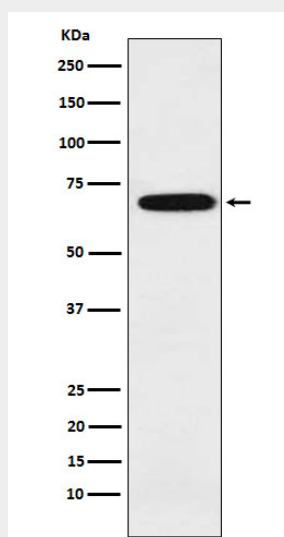
Tissue Location

Expressed most strongly in peripheral blood leukocytes, the spleen, and the thymus.

IKZF3 Antibody - Protocols

Provided below are standard protocols that you may find useful for product applications.

- [Western Blot](#)
- [Blocking Peptides](#)
- [Dot Blot](#)
- [Immunohistochemistry](#)
- [Immunofluorescence](#)
- [Immunoprecipitation](#)
- [Flow Cytometry](#)
- [Cell Culture](#)

IKZF3 Antibody - Images

Western blot analysis of IKZF3 expression in Ramos cell lysate.