

**FANCA Antibody**  
**Rabbit mAb**  
**Catalog # AP92231****Specification**

---

**FANCA Antibody - Product Information**

Application	WB, IP
Primary Accession	<a href="#">O15360</a>
Clonality	Monoclonal
<b>Other Names</b>	
FA 1; FA; FA H; FA1; FAA; FACA; FAH; Fanca; FANCH;	
Isotype	Rabbit IgG
Host	Rabbit
Calculated MW	162775 Da

**FANCA Antibody - Additional Information**

Dilution	WB~~1:1000 IP~~N/A
Purification	Affinity-chromatography
Immunogen	A synthesized peptide derived from human FANCA
Description	DNA repair protein that may operate in a postreplication repair or a cell cycle checkpoint function. May be involved in interstrand DNA cross-link repair and in the maintenance of normal chromosome stability.
Storage Condition and Buffer	Rabbit IgG in phosphate buffered saline , pH 7.4, 150mM NaCl, 0.02% sodium azide and 50% glycerol. Store at +4°C short term. Store at -20°C long term. Avoid freeze / thaw cycle.

**FANCA Antibody - Protein Information****Name** FANCA**Synonyms** FAA, FACA, FANCH**Function**

DNA repair protein that may operate in a postreplication repair or a cell cycle checkpoint function. May be involved in interstrand DNA cross-link repair and in the maintenance of normal chromosome stability.

**Cellular Location**

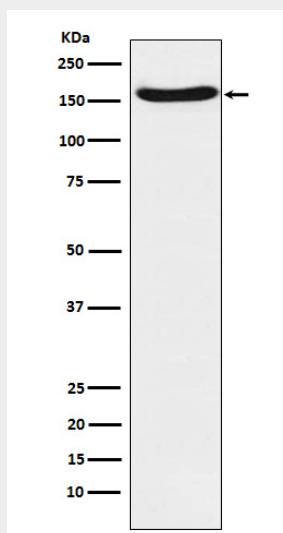
Nucleus. Cytoplasm. Note=The major form is nuclear. The minor form is cytoplasmic

## FANCA Antibody - Protocols

Provided below are standard protocols that you may find useful for product applications.

- [Western Blot](#)
- [Blocking Peptides](#)
- [Dot Blot](#)
- [Immunohistochemistry](#)
- [Immunofluorescence](#)
- [Immunoprecipitation](#)
- [Flow Cytometry](#)
- [Cell Culture](#)

## FANCA Antibody - Images



Western blot analysis of FANCA expression in A431 cell lysate.