

**TYRO3 Antibody**  
**Rabbit mAb**  
**Catalog # AP92233****Specification**

---

**TYRO3 Antibody - Product Information**

Application	WB, IHC, IP
Primary Accession	<a href="#">Q06418</a>
Reactivity	Rat
Clonality	Monoclonal

**Other Names**

Brt; BYK; DTK; Etk-2; Rek; RSE; SKY; Tif; tyro3;

Isotype	Rabbit IgG
Host	Rabbit
Calculated MW	96905 Da

**TYRO3 Antibody - Additional Information**

Dilution	WB~~1:1000 IHC~~1:100~500 IP~~N/A
Purification	Affinity-chromatography
Immunogen	A synthesized peptide derived from human TYRO3
Description	May be involved in cell adhesion processes, particularly in the central nervous system. In case of filovirus infection, seems to function as a cell entry factor.
Storage Condition and Buffer	Rabbit IgG in phosphate buffered saline , pH 7.4, 150mM NaCl, 0.02% sodium azide and 50% glycerol. Store at +4°C short term. Store at -20°C long term. Avoid freeze / thaw cycle.

**TYRO3 Antibody - Protein Information****Name** TYRO3**Synonyms** BYK, DTK, RSE, SKY, TIF**Function**

Receptor tyrosine kinase that transduces signals from the extracellular matrix into the cytoplasm by binding to several ligands including TULP1 or GAS6. Regulates many physiological processes including cell survival, migration and differentiation. Ligand binding at the cell surface induces dimerization and autophosphorylation of TYRO3 on its intracellular domain that provides docking sites for downstream signaling molecules. Following activation by ligand, interacts with PIK3R1 and thereby enhances PI3-kinase activity. Activates the AKT survival pathway, including nuclear

translocation of NF-kappa-B and up-regulation of transcription of NF-kappa-B-regulated genes. TYRO3 signaling plays a role in various processes such as neuron protection from excitotoxic injury, platelet aggregation and cytoskeleton reorganization. Also plays an important role in inhibition of Toll-like receptors (TLRs)-mediated innate immune response by activating STAT1, which selectively induces production of suppressors of cytokine signaling SOCS1 and SOCS3.

**Cellular Location**

Cell membrane; Single-pass type I membrane protein

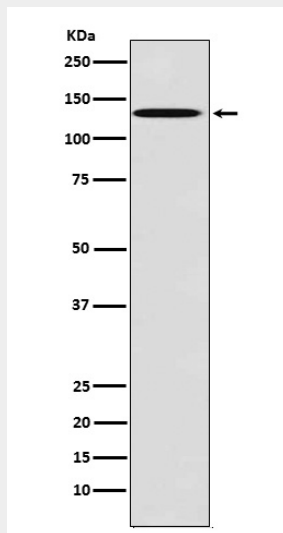
**Tissue Location**

Abundant in the brain and lower levels in other tissues

**TYRO3 Antibody - Protocols**

Provided below are standard protocols that you may find useful for product applications.

- [Western Blot](#)
- [Blocking Peptides](#)
- [Dot Blot](#)
- [Immunohistochemistry](#)
- [Immunofluorescence](#)
- [Immunoprecipitation](#)
- [Flow Cytometry](#)
- [Cell Culture](#)

**TYRO3 Antibody - Images**

Western blot analysis of TYRO3 expression in MCF7 cell lysate.