

**CPEB1 Antibody**  
**Rabbit mAb**  
**Catalog # AP92240****Specification**

---

**CPEB1 Antibody - Product Information**

Application	WB, IP
Primary Accession	<a href="#">Q9BZB8</a>
Clonality	Monoclonal
<b>Other Names</b>	
CEBP; CPE-BP1; CPEB1; h CEBP; hCPEB 1;	
Isotype	Rabbit IgG
Host	Rabbit
Calculated MW	62595 Da

**CPEB1 Antibody - Additional Information**

Purification	Affinity-chromatography
Immunogen	A synthesized peptide derived from human CPEB1
Description	Sequence-specific RNA-binding protein that regulates mRNA cytoplasmic polyadenylation and translation initiation during oocyte maturation, early development and at postsynapse sites of neurons. Binds to the cytoplasmic polyadenylation element (CPE), an uridine-rich sequence element (consensus sequence 5'-UUUUUAU-3') within the mRNA 3'-UTR.
Storage Condition and Buffer	Rabbit IgG in phosphate buffered saline , pH 7.4, 150mM NaCl, 0.02% sodium azide and 50% glycerol. Store at +4°C short term. Store at -20°C long term. Avoid freeze / thaw cycle.

**CPEB1 Antibody - Protein Information****Name** CPEB1**Synonyms** CPEB**Function**

Sequence-specific RNA-binding protein that regulates mRNA cytoplasmic polyadenylation and translation initiation during oocyte maturation, early development and at postsynapse sites of neurons. Binds to the cytoplasmic polyadenylation element (CPE), an uridine-rich sequence element (consensus sequence 5'-UUUUUAU-3') within the mRNA 3'- UTR. RNA binding results in a clear conformational change analogous to the Venus fly trap mechanism (PubMed:<a

href="http://www.uniprot.org/citations/24990967" target="\_blank">24990967</a>). In absence of phosphorylation and in association with TACC3 is also involved as a repressor of translation of CPE-containing mRNA; a repression that is relieved by phosphorylation or degradation (By similarity). Involved in the transport of CPE-containing mRNA to dendrites; those mRNAs may be transported to dendrites in a translationally dormant form and translationally activated at synapses (By similarity). Its interaction with APLP1 promotes local CPE-containing mRNA polyadenylation and translation activation (By similarity). Induces the assembly of stress granules in the absence of stress. Required for cell cycle progression, specifically for prophase entry (PubMed:<a href="http://www.uniprot.org/citations/26398195" target="\_blank">26398195</a>).

#### **Cellular Location**

Cytoplasm. Nucleus Cytoplasm, P-body. Cytoplasmic granule. Synapse. Membrane. Postsynaptic density. Cell projection, dendrite Note=Continuously shuttling between nucleus and cytoplasm (PubMed:18923137). Also found in stress granules. Recruited to stress granules (SGs) upon arsenite treatment. In dendrites (By similarity) Localizes in synaptosomes at dendritic synapses of neurons (By similarity). Strongly enriched in postsynaptic density (PSD) fractions (By similarity). Transported into dendrites in a microtubule-dependent fashion and colocalizes in mRNA-containing particles with TACC3, dynein and kinesin (By similarity). Membrane-associated (By similarity) Colocalizes at excitatory synapses with members of the polyadenylation and translation complex factors (CPSF, APLP1, TACC3, AURKA, SYP, etc.) including CPE-containing RNAs (By similarity). {ECO:0000250, ECO:0000269|PubMed:18923137}

#### **Tissue Location**

Isoform 1 is expressed in immature oocytes, ovary, brain and heart. Isoform 2 is expressed in brain and heart. Isoform 3 and isoform 4 are expressed in brain. Expressed in breast tumors and several tumor cell lines.

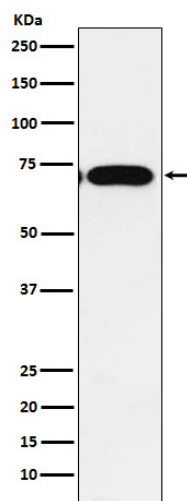
#### **CPEB1 Antibody - Protocols**

Provided below are standard protocols that you may find useful for product applications.

- [Western Blot](#)
- [Blocking Peptides](#)
- [Dot Blot](#)
- [Immunohistochemistry](#)
- [Immunofluorescence](#)
- [Immunoprecipitation](#)
- [Flow Cytometry](#)
- [Cell Culture](#)

#### **CPEB1 Antibody - Images**





Western blot analysis of CPEB1 expression in A549 cell lysate.