

MRC2/ENDO180 Antibody
Rabbit mAb
Catalog # AP92242**Specification**

MRC2/ENDO180 Antibody - Product Information

Application	WB
Primary Accession	Q9UBG0
Clonality	Monoclonal
Other Names	
CD280 antigen; MRC2; ENDO180; KIAA0709; UPARAP;	
Isotype	Rabbit IgG
Host	Rabbit
Calculated MW	166674 Da

MRC2/ENDO180 Antibody - Additional Information

Dilution	WB~~1:1000
Purification	Affinity-chromatography
Immunogen	A synthesized peptide derived from human MRC2
Description	May play a role as endocytotic lectin receptor displaying calcium-dependent lectin activity. Internalizes glycosylated ligands from the extracellular space for release in an endosomal compartment via clathrin-mediated endocytosis.
Storage Condition and Buffer	Rabbit IgG in phosphate buffered saline , pH 7.4, 150mM NaCl, 0.02% sodium azide and 50% glycerol. Store at +4°C short term. Store at -20°C long term. Avoid freeze / thaw cycle.

MRC2/ENDO180 Antibody - Protein Information**Name** MRC2**Synonyms** CLEC13E, ENDO180, KIAA0709, UPARAP**Function**

May play a role as endocytotic lectin receptor displaying calcium-dependent lectin activity. Internalizes glycosylated ligands from the extracellular space for release in an endosomal compartment via clathrin-mediated endocytosis. May be involved in plasminogen activation system controlling the extracellular level of PLAUR/PLAU, and thus may regulate protease activity at the cell surface. May contribute to cellular uptake, remodeling and degradation of extracellular collagen matrices. May play a role during cancer progression as well as in other chronic tissue destructive diseases acting on collagen turnover. May participate in remodeling of extracellular matrix cooperating with the matrix metalloproteinases (MMPs).

Cellular Location

Membrane; Single-pass type I membrane protein.

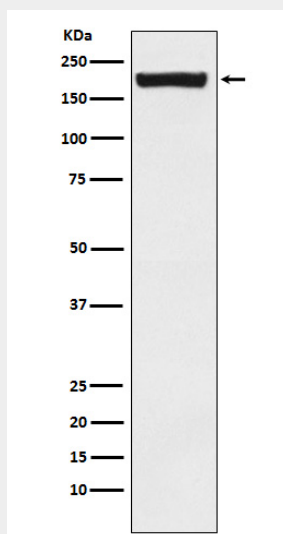
Tissue Location

Ubiquitous with low expression in brain, placenta, lung, kidney, pancreas, spleen, thymus and colon. Expressed in endothelial cells, fibroblasts and macrophages. Highly expressed in fetal lung and kidney.

MRC2/ENDO180 Antibody - Protocols

Provided below are standard protocols that you may find useful for product applications.

- [Western Blot](#)
- [Blocking Peptides](#)
- [Dot Blot](#)
- [Immunohistochemistry](#)
- [Immunofluorescence](#)
- [Immunoprecipitation](#)
- [Flow Cytometry](#)
- [Cell Culture](#)

MRC2/ENDO180 Antibody - Images

Western blot analysis of MRC2/ENDO180 expression in Saos2 cell lysate.