

NeuroD2 Antibody
Rabbit mAb
Catalog # AP92244**Specification**

NeuroD2 Antibody - Product Information

Application	WB
Primary Accession	Q15784
Reactivity	Rat
Clonality	Monoclonal
Other Names	
bHLHa1; NDR2; NDRF; neuroD related factor; NeuroD2; neurogenic differentiation 2;	
Isotype	Rabbit IgG
Host	Rabbit
Calculated MW	41361 Da

NeuroD2 Antibody - Additional Information

Dilution	WB~~1:1000
Purification	Affinity-chromatography
Immunogen	A synthesized peptide derived from human NeuroD2
Description	Appears to mediate neuronal differentiation.
Storage Condition and Buffer	Rabbit IgG in phosphate buffered saline , pH 7.4, 150mM NaCl, 0.02% sodium azide and 50% glycerol. Store at +4°C short term. Store at -20°C long term. Avoid freeze / thaw cycle.

NeuroD2 Antibody - Protein Information**Name** NEUROD2**Synonyms** BHLHA1, NDRF**Function**

Transcriptional regulator implicated in neuronal determination. Mediates calcium-dependent transcription activation by binding to E box-containing promoter. Critical factor essential for the repression of the genetic program for neuronal differentiation; prevents the formation of synaptic vesicle clustering at active zone to the presynaptic membrane in postmitotic neurons. Induces transcription of ZEB1, which in turn represses neuronal differentiation by down- regulating REST expression. Plays a role in the establishment and maturation of thalamocortical connections; involved in the segregation of thalamic afferents into distinct barrel domains within layer VI of the somatosensory cortex. Involved in the development of the cerebellar and hippocampal granular neurons, neurons in the basolateral nucleus of amygdala and the hypothalamic-pituitary axis. Associates with chromatin to the DPYSL3 E box-containing promoter (By similarity).

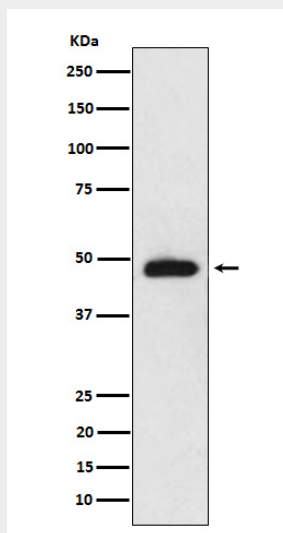
Cellular Location

Nucleus {ECO:0000255|PROSITE-ProRule:PRU00981}.

NeuroD2 Antibody - Protocols

Provided below are standard protocols that you may find useful for product applications.

- [Western Blot](#)
- [Blocking Peptides](#)
- [Dot Blot](#)
- [Immunohistochemistry](#)
- [Immunofluorescence](#)
- [Immunoprecipitation](#)
- [Flow Cytometry](#)
- [Cell Culture](#)

NeuroD2 Antibody - Images

Western blot analysis of NeuroD2 expression in mouse cerebellum cell lysate.