

**EHMT2/G9A Antibody**  
**Rabbit mAb**  
**Catalog # AP92247****Specification****EHMT2/G9A Antibody - Product Information**

Application	WB, IHC
Primary Accession	<a href="#">Q96KQ7</a>
Clonality	Monoclonal
<b>Other Names</b>	
Bat8; Ehmt2; G9A; GAT8; NG36;	
Isotype	Rabbit IgG
Host	Rabbit
Calculated MW	132370 Da

**EHMT2/G9A Antibody - Additional Information**

Dilution	WB~~1:1000 IHC~~1:100~500
Purification	Affinity-chromatography
Immunogen	A synthesized peptide derived from human EHMT2/G9A
Description	Histone methyltransferase that specifically mono- and dimethylates 'Lys-9' of histone H3 (H3K9me1 and H3K9me2, respectively) in euchromatin. H3K9me represents a specific tag for epigenetic transcriptional repression by recruiting HP1 proteins to methylated histones.
Storage Condition and Buffer	Rabbit IgG in phosphate buffered saline , pH 7.4, 150mM NaCl, 0.02% sodium azide and 50% glycerol. Store at +4°C short term. Store at -20°C long term. Avoid freeze / thaw cycle.

**EHMT2/G9A Antibody - Protein Information****Name** EHMT2**Synonyms** BAT8, C6orf30, G9A, KMT1C, NG36**Function**

Histone methyltransferase that specifically mono- and dimethylates 'Lys-9' of histone H3 (H3K9me1 and H3K9me2, respectively) in euchromatin. H3K9me represents a specific tag for epigenetic transcriptional repression by recruiting HP1 proteins to methylated histones. Also mediates monomethylation of 'Lys-56' of histone H3 (H3K56me1) in G1 phase, leading to promote interaction between histone H3 and PCNA and regulating DNA replication. Also weakly methylates 'Lys-27' of histone H3 (H3K27me). Also required for DNA methylation, the histone

methyltransferase activity is not required for DNA methylation, suggesting that these 2 activities function independently. Probably targeted to histone H3 by different DNA-binding proteins like E2F6, MGA, MAX and/or DP1. May also methylate histone H1. In addition to the histone methyltransferase activity, also methylates non-histone proteins: mediates dimethylation of 'Lys-373' of p53/TP53. Also methylates CDYL, WIZ, ACIN1, DNMT1, HDAC1, ERCC6, KLF12 and itself.

#### **Cellular Location**

Nucleus. Chromosome. Note=Associates with euchromatic regions (PubMed:11316813). Does not associate with heterochromatin (PubMed:11316813).

#### **Tissue Location**

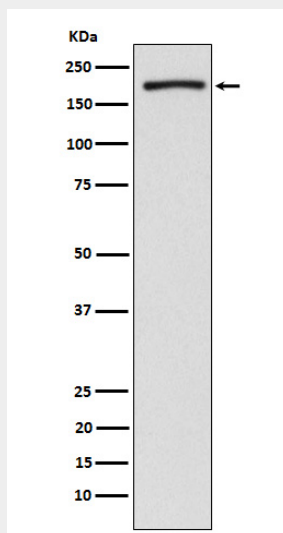
Expressed in all tissues examined, with high levels in fetal liver, thymus, lymph node, spleen and peripheral blood leukocytes and lower level in bone marrow

### **EHMT2/G9A Antibody - Protocols**

Provided below are standard protocols that you may find useful for product applications.

- [Western Blot](#)
- [Blocking Peptides](#)
- [Dot Blot](#)
- [Immunohistochemistry](#)
- [Immunofluorescence](#)
- [Immunoprecipitation](#)
- [Flow Cytometry](#)
- [Cell Culture](#)

### **EHMT2/G9A Antibody - Images**



Western blot analysis of EHMT2/G9A expression in HeLa cell lysate.