

CD239 Antibody
Rabbit mAb
Catalog # AP92250**Specification**

CD239 Antibody - Product Information

Application	WB, IHC, FC, IP
Primary Accession	P50895
Reactivity	Rat
Clonality	Monoclonal
Other Names	
Bcam; CD239; Lutheran; MSK19;	

Isotype	Rabbit IgG
Host	Rabbit
Calculated MW	67405 Da

CD239 Antibody - Additional Information

Dilution	WB~~1:1000 IHC~~1:100~500 FC~~1:10~50 IP~~N/A
Purification	Affinity-chromatography
Immunogen	A synthesized peptide derived from human CD239
Description	Laminin alpha-5 receptor. May mediate intracellular signaling.
Storage Condition and Buffer	Rabbit IgG in phosphate buffered saline , pH 7.4, 150mM NaCl, 0.02% sodium azide and 50% glycerol. Store at +4°C short term. Store at -20°C long term. Avoid freeze / thaw cycle.

CD239 Antibody - Protein Information**Name** BCAM**Synonyms** LU, MSK19**Function**

Transmembrane glycoprotein that functions as both a receptor and an adhesion molecule playing a crucial role in cell adhesion, motility, migration and invasion (PubMed:9616226, PubMed:31413112). Extracellular domain enables binding to extracellular matrix proteins, such as laminin, integrin and other ligands while its intracellular domain interacts with cytoskeletal proteins like hemoglobin, facilitating cell signal transduction (PubMed:17158232). Serves as a receptor for laminin alpha-5/LAMA5 to promote cell

adhesion (PubMed:15975931). Mechanistically, JAK2 induces BCAM phosphorylation and activates its adhesion to laminin by stimulating a Rap1/AKT signaling pathway in the absence of EPOR (PubMed:23160466).

Cellular Location

Cell membrane; Single-pass type I membrane protein

Tissue Location

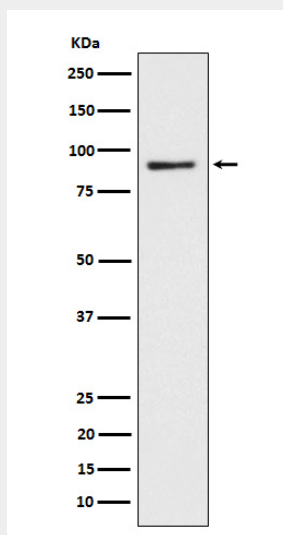
Wide tissue distribution (highest in the pancreas and very low in brain). Closely associated with the basal layer of cells in epithelia and the endothelium of blood vessel walls

CD239 Antibody - Protocols

Provided below are standard protocols that you may find useful for product applications.

- [Western Blot](#)
- [Blocking Peptides](#)
- [Dot Blot](#)
- [Immunohistochemistry](#)
- [Immunofluorescence](#)
- [Immunoprecipitation](#)
- [Flow Cytometry](#)
- [Cell Culture](#)

CD239 Antibody - Images



Western blot analysis of CD239 expression in HepG2 cell lysate.