

GSC Antibody
Rabbit mAb
Catalog # AP92251

Specification

GSC Antibody - Product Information

Application	WB, IP
Primary Accession	P56915
Clonality	Monoclonal
Other Names	
Goosecoid; GSC;	
Isotype	Rabbit IgG
Host	Rabbit
Calculated MW	28150 Da

GSC Antibody - Additional Information

Dilution	WB~~1:1000 IP~~N/A
Purification	Affinity-chromatography
Immunogen	A synthesized peptide derived from human GSC
Description	Regulates chordin (CHRD). May play a role in spatial programing within discrete embryonic fields or lineage compartments during organogenesis. In concert with NKX3-2, plays a role in defining the structural components of the middle ear; required for the development of the entire tympanic ring.
Storage Condition and Buffer	Rabbit IgG in phosphate buffered saline , pH 7.4, 150mM NaCl, 0.02% sodium azide and 50% glycerol. Store at +4°C short term. Store at -20°C long term. Avoid freeze / thaw cycle.

GSC Antibody - Protein Information

Name GSC

Function

Regulates chordin (CHRD). May play a role in spatial programing within discrete embryonic fields or lineage compartments during organogenesis. In concert with NKX3-2, plays a role in defining the structural components of the middle ear; required for the development of the entire tympanic ring (By similarity). Probably involved in the regulatory networks that define neural crest cell fate specification and determine mesoderm cell lineages in mammals.

Cellular Location

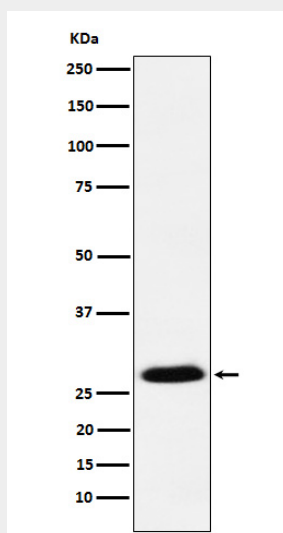
Nucleus.

GSC Antibody - Protocols

Provided below are standard protocols that you may find useful for product applications.

- [Western Blot](#)
- [Blocking Peptides](#)
- [Dot Blot](#)
- [Immunohistochemistry](#)
- [Immunofluorescence](#)
- [Immunoprecipitation](#)
- [Flow Cytometry](#)
- [Cell Culture](#)

GSC Antibody - Images



Western blot analysis of GSC expression in MCF7 cell lysate.