

PSMA2 Antibody
Rabbit mAb
Catalog # AP92255**Specification**

PSMA2 Antibody - Product Information

Application	WB, IHC, FC, ICC
Primary Accession	P25787
Reactivity	Rat
Clonality	Monoclonal

Other Names

HC3; PMSA2; Proteasome component C3; PSC2; PSC3; psmA2;

Isotype	Rabbit IgG
Host	Rabbit
Calculated MW	25899 Da

PSMA2 Antibody - Additional Information

Dilution	WB~~1:1000 IHC~~1:100~500 FC~~1:10~50 ICC~~N/A
Purification	Affinity-chromatography
Immunogen	A synthesized peptide derived from human PSMA2
Description	The proteasome is a multicatalytic proteinase complex which is characterized by its ability to cleave peptides with Arg, Phe, Tyr, Leu, and Glu adjacent to the leaving group at neutral or slightly basic pH.
Storage Condition and Buffer	Rabbit IgG in phosphate buffered saline , pH 7.4, 150mM NaCl, 0.02% sodium azide and 50% glycerol. Store at +4°C short term. Store at -20°C long term. Avoid freeze / thaw cycle.

PSMA2 Antibody - Protein Information**Name** PSMA2 ([HGNC:9531](#))**Synonyms** HC3, PSC3**Function**

Component of the 20S core proteasome complex involved in the proteolytic degradation of most intracellular proteins. This complex plays numerous essential roles within the cell by associating with different regulatory particles. Associated with two 19S regulatory particles, forms the 26S proteasome and thus participates in the ATP- dependent degradation of ubiquitinated proteins.

The 26S proteasome plays a key role in the maintenance of protein homeostasis by removing misfolded or damaged proteins that could impair cellular functions, and by removing proteins whose functions are no longer required. Associated with the PA200 or PA28, the 20S proteasome mediates ubiquitin- independent protein degradation. This type of proteolysis is required in several pathways including spermatogenesis (20S-PA200 complex) or generation of a subset of MHC class I-presented antigenic peptides (20S-PA28 complex).

Cellular Location

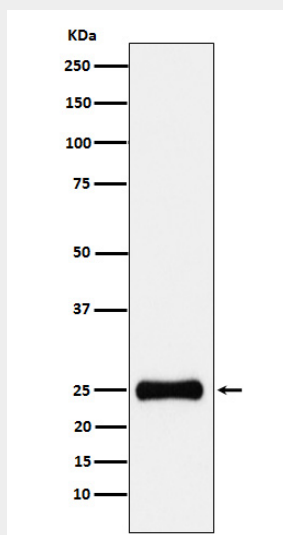
Cytoplasm. Nucleus. Note=Translocated from the cytoplasm into the nucleus following interaction with AKIRIN2, which bridges the proteasome with the nuclear import receptor IPO9 (PubMed:34711951) Colocalizes with TRIM5 in cytoplasmic bodies (By similarity) {ECO:0000250|UniProtKB:P49722, ECO:0000269|PubMed:34711951}

PSMA2 Antibody - Protocols

Provided below are standard protocols that you may find useful for product applications.

- [Western Blot](#)
- [Blocking Peptides](#)
- [Dot Blot](#)
- [Immunohistochemistry](#)
- [Immunofluorescence](#)
- [Immunoprecipitation](#)
- [Flow Cytometry](#)
- [Cell Culture](#)

PSMA2 Antibody - Images



Western blot analysis of PSMA2 expression in HepG2 cell lysate.